

# WATERSHED RESTORATION AND STORMWATER MANAGEMENT

## Basic Principles of Watershed Restoration and Stormwater Management in the Chesapeake Bay Region

The objective of this document is to provide an overview of the most relevant urban stormwater management and watershed restoration issues, common mitigating practices, and regulations relevant to the Chesapeake Bay watershed. Land use and landscaping practices can drastically change how water flows on the landscape and ultimately impacts the health of our streams, rivers, and bays.

Regulatory requirements for stormwater management are beginning to include urban runoff from **both** pervious and impervious areas, so many of the newer, “greener” stormwater management practices may become part of the landscape of an average urban site. Thus, background knowledge in stormwater quantity and quality will be beneficial for landscape professionals. Although there are differences in practices and how stormwater is managed in the different Bay states, the basic concepts remain universal and are highlighted in this document. References to specific state requirements and programs are provided. A list of practices and guidance on designing sustainable landscapes is also included.

### What is an Ecosystem?

In order to understand sustainable landscaping, it is important to understand the concept of an ecosystem:

*“An ecosystem is a complex set of relationships among living and non-living things. Air, water, soil, sunlight, plants and animals – including humans – make up an ecosystem. Ecosystems can be as tiny as a patch of dirt in your backyard, or as large as the entire Chesapeake Bay watershed. The Chesapeake Bay, the largest estuary in the United States, is an extremely productive and complex ecosystem. The Bay ecosystem consists of the Bay itself, its local rivers and streams, and all the plants and animals it supports.” (Chesapeake Bay Program <http://www.chesapeakebay.net/discover/bayecosystem>).*

Central to the ecosystem concept is the idea that living organisms are continually engaged in a set of relationships with every other element, constituting the environment in which they exist. Ecosystems can be bounded and discussed with tremendous variety of scope, and can describe any situation where there is a relationship between organisms and their environment. Organisms that are part of an ecosystem are interdependent with other organisms within that ecosystem, i.e., they cannot live on their own (Vreugdenhil 2003). Sustainable landscaping seeks to create and/or maintain a balanced ecosystem.

### What is a Watershed?

A watershed is an area of land that drains into a body of water. When precipitation falls to the ground, it either moves downward through the ground to the underground aquifers or stays at the surface moving horizontally across forested, agricultural, or urban/suburban areas as overland flow (“runoff”) before entering bodies of water like ponds, lakes, reservoirs, streams, rivers, and bays. Groundwater from aquifers also flows or discharges into natural waterbodies.

Together, land and water make up a watershed system. Watersheds (or basins) can be any size, but generally the larger the body of water, the larger the watershed. For example, the Chesapeake Bay Watershed covers 64,000 square miles and drains from six states and the District of Columbia. Smaller local or sub-watersheds (tributaries) drain much smaller areas that are sometimes only a few acres. Regardless of where someone lives, they are living within a watershed. Signage along the road can sometimes identify the boundaries of different watersheds. Figure 1 shows the major river watersheds that comprise the larger Chesapeake Bay watershed.

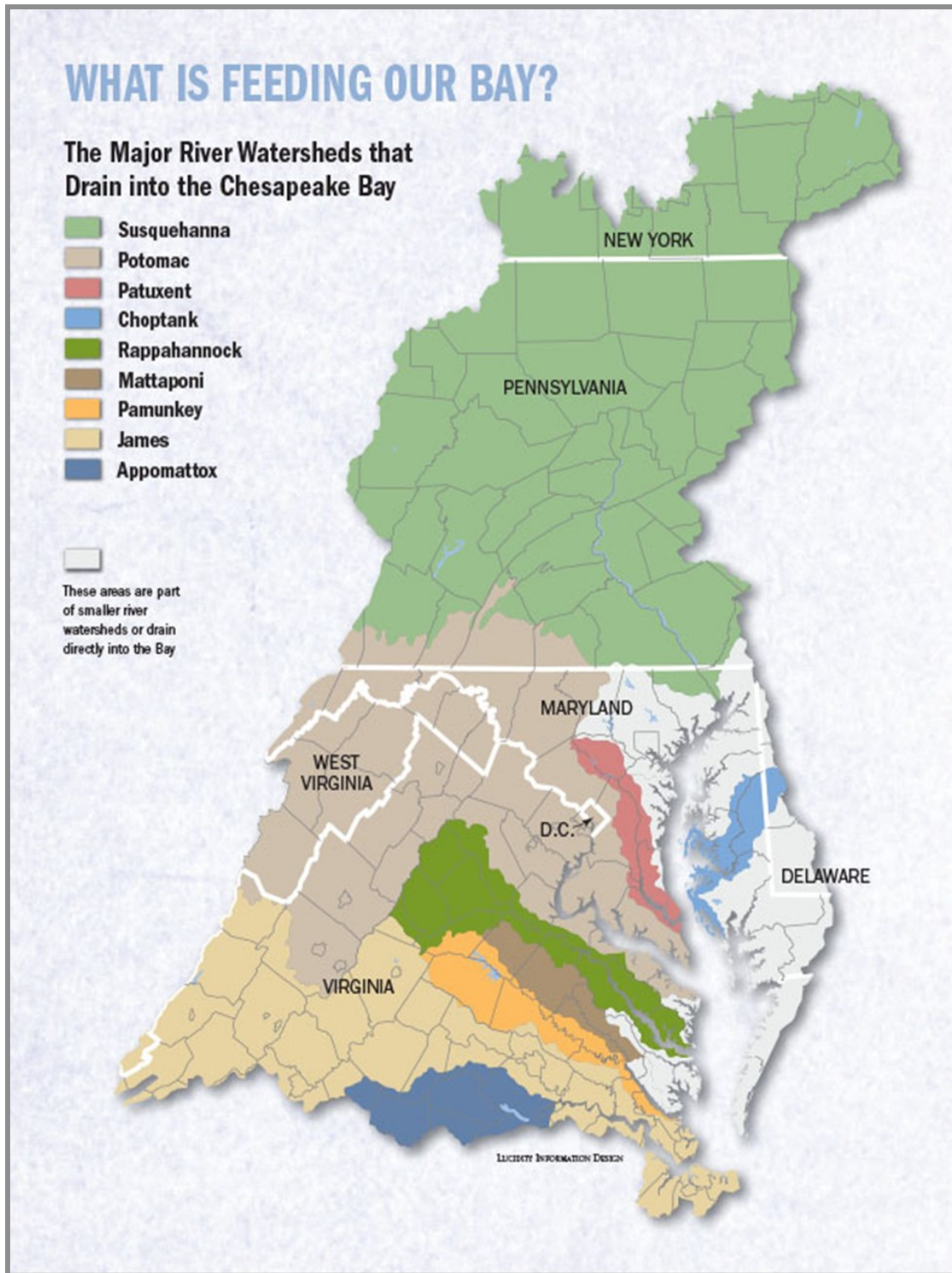


Figure 1. Major river watersheds of the Chesapeake Bay. Source: Chesapeake Bay Foundation <https://www.cbf.org/about-the-bay/maps/geography/major-river-watersheds-of-the-chesapeake-bay.html>.

Healthy watersheds are a vital component of a healthy environment. Watersheds act as filters for runoff, providing clean water for drinking, irrigation, vegetation, aquatic life and industry. Recreation and leisure activities are important components of watersheds, with many people taking advantage of boating, fishing, and swimming in our mid-Atlantic waters. Watersheds also support a diverse variety of plant and wildlife communities.

Scientists and community leaders recognize the best way to protect water resources is to understand and manage them on a watershed basis. Human activities as well as natural events that occur in a watershed can affect water quality throughout the entire system. Figure 2 illustrates a typical watershed. All upstream land uses and practices contribute to downstream water quality. The highest areas of the landscape (indicated by a white dashed line and the mountain tops in Figure 2) are the boundaries of the watershed.

Parks, open spaces, riparian buffers, streams, and wetlands connect aquatic and forested ecosystems within the watershed. This connected natural system is also known as “green” infrastructure. In essence, environmental site planners, urban nutrient planners and sustainable landscape professionals are stewards of the green infrastructure system.



Figure 2. Watershed model. Green = positive factors; red = negative factors.

Source: Potomac Conservancy 2007.

### What Is Stormwater?

Stormwater begins as precipitation in the form of rain, snow, or ice. The movement of water from precipitation through a natural environment or ecosystem is called the *hydrologic cycle*. In natural environments, precipitation is slowed down, filtered, and absorbed by plants or soaked into the ground through a process called infiltration. Living vegetation takes up the water and then creates water vapor that is released to the atmosphere; this is known as *evapotranspiration*.

Water also returns to the atmosphere through evaporation, then becomes precipitation again to complete the hydrologic cycle (Figure 3). On pervious areas, precipitation, usually in the form of rain, falls on the land and infiltration occurs until soil saturation has been reached, after which runoff will occur. Runoff from pervious surfaces may also occur in areas with steep slopes, low vegetation, and/or during high, intense rainfall events when land cover or slopes don't allow water to slow down and infiltrate. In urban areas, impervious or hard surfaces don't allow for infiltration and runoff occurs almost immediately. The terms "stormwater" and "runoff" are synonymous.

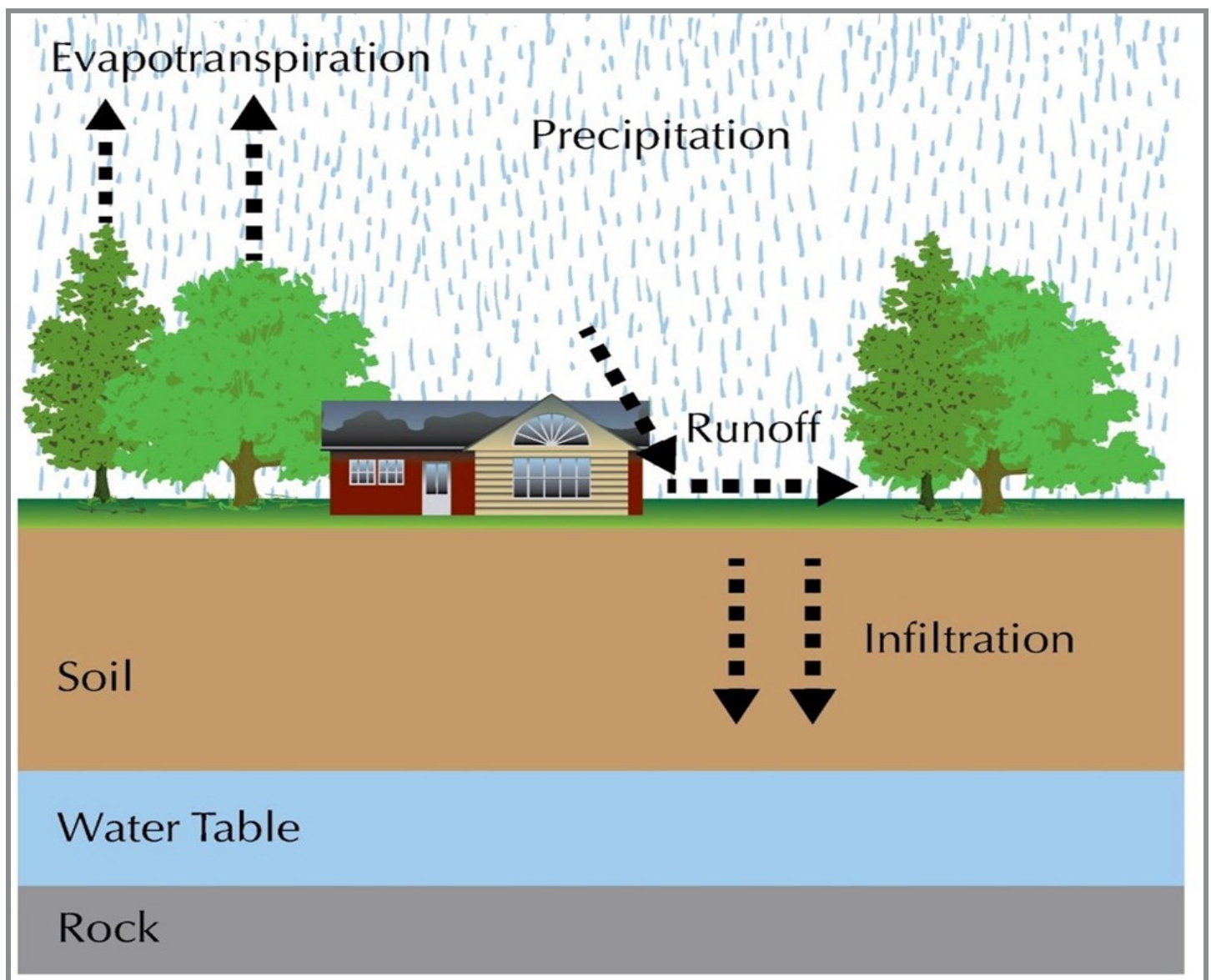


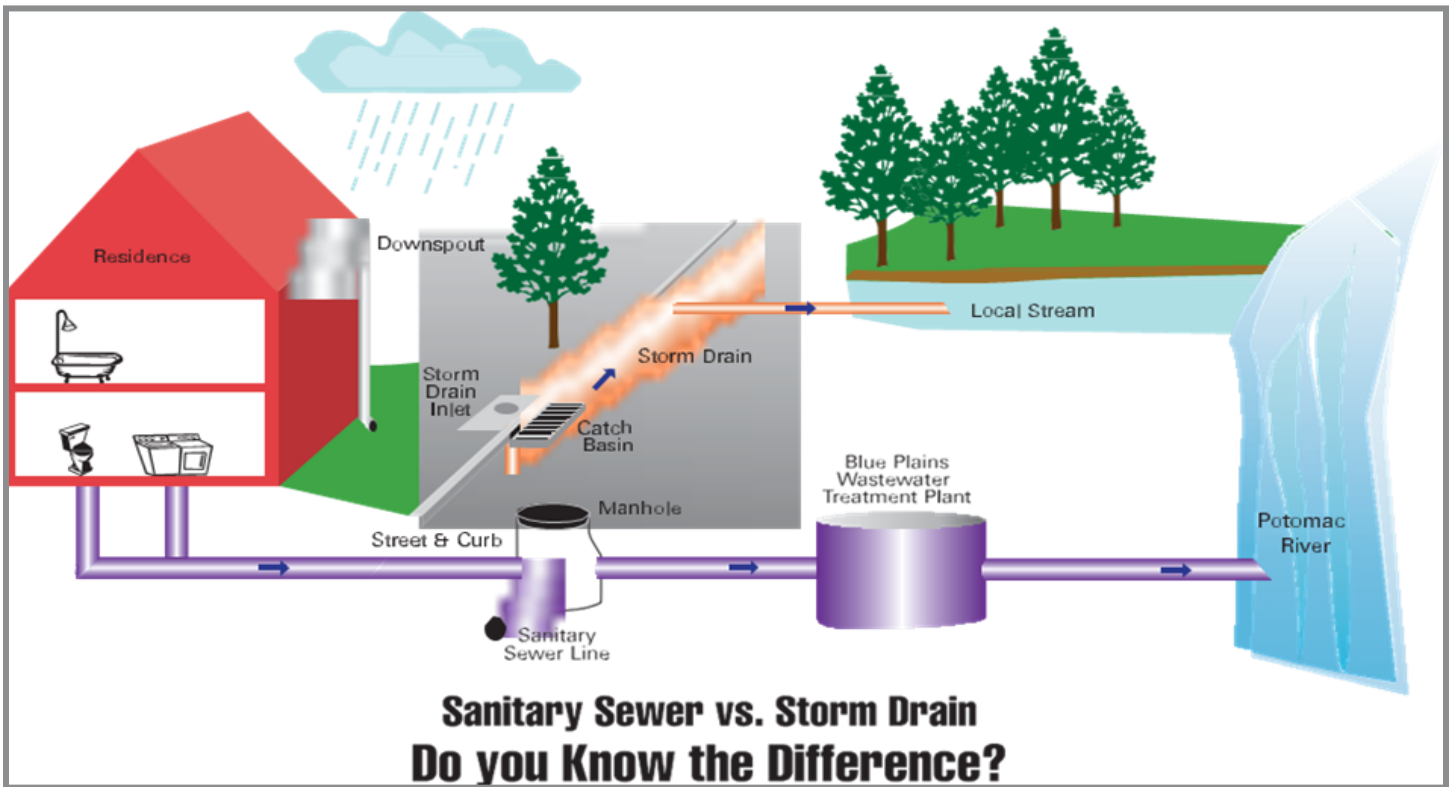
Figure 3. Simplified hydrologic cycle of a residential lot. Modified from source: *What is a Watershed?* Virginia Cooperative Extension Publication 426-041.

Factors that affect the volume and velocity of runoff include:

- Quantity, frequency, intensity, and duration of precipitation.
- Extent of impervious surfaces on the site (rooftops, driveways, patios and decks, roadways, parking lots, etc.).
- Type and condition of soils, i.e., water infiltrates clay or compacted soils slower than sandy soils.
- Soil saturation level at the time of the precipitation. Pervious areas that would normally infiltrate can be a source of runoff if the soil is already saturated before precipitation. Soil saturation can also occur due to excessive irrigation.
- Vegetative canopy layers and coverage. Runoff is reduced on sites with a higher proportion of vegetative coverage and multiple canopy layers.
- Extent and steepness of slopes.
- Land use and land cover.

## Where Does Stormwater Go?

In urban/suburban areas, water supply, wastewater, and stormwater are managed through piped systems. Potable water and sanitary sewer or wastewater systems enter and exit a building or property through separate systems. Wastewater (household water and waste from toilets, sinks, and showers) leaving a property is conveyed through pipes and typically discharged to a wastewater treatment facility or possibly a septic system. Stormwater drains from rooftops and streets and is collected through storm drains or ditches and conveyed separately from wastewater through “municipal separate storm sewer systems” or MS4s, which drain directly into receiving waters (usually smaller streams and/or lakes, wetlands, bays, estuaries, ponds or reservoirs).



### Sanitary Sewer

The sanitary sewer collects wastewater generated from the indoor plumbing (i.e. toilets, sinks, showers, washing machines, etc.) of residential, commercial and industrial properties and conveys it to a wastewater treatment plant. The City’s sanitary sewers flow to Blue Plains Wastewater Treatment Plant, where nutrients, sediment and pollution is removed from the water before being discharged into the Potomac River.

### Storm Drain

The storm drain is a system of inlets, pipes and swales that drain excess rain and ground water from impervious surfaces (paved streets, parking lots, sidewalks, roofs) to prevent or minimize flooding. The stormwater runoff collected by the storm drain is discharged to local streams untreated. The water then flows to the Potomac River and eventually to the Chesapeake Bay.

Figure 4: Sanitary Sewer vs. Storm Drain Source: City of Rockville 2014

Traditionally, stormwater was managed by moving it as quickly as possible away from roads and structures. Figure 4 illustrates and compares the wastewater and stormwater pathways in a typical urban “gray infrastructure” system. Wastewater from laundry, bathroom sinks, and showers is often classified as “gray water” and could be recycled; however, in most homes, this gray water is discharged to the wastewater or “black water” system (shown in purple in Figure 4). In some cases, stormwater is also classified as a gray water system.

Many people believe that stormwater flows through storm drains to a treatment facility. This is true only in some older urban areas where both stormwater and wastewater flow through a “combined sewer system” to a treatment facility. A major problem of a combined sewer system is overflow of untreated or partially treated wastewater that occurs when runoff volume exceeds the conveyance and storage capacity of the system (e.g., during a heavy rain). This is known as a “combined sewer overflow” (CSO) and is one source of water pollution in urban areas. In most, modern systems, storm sewers and sanitary sewers are managed separately.

In many urban, suburban, and rural areas, stormwater on and between properties was traditionally conveyed away from buildings through grading and drainage swales. Sites are graded so that runoff flows over the land surface and discharges either directly into a waterbody or flows into drainage swales and roadside ditches which also discharge directly into a local waterbody or stormwater pond.

### Stormwater Quantity and Quality Issues

As natural areas and undeveloped land are cleared for human use and development (urbanization), the systems that filter and absorb runoff (such as forests, wetlands, and soils) within the watershed are replaced by rooftops, roadways and other grey infrastructure such as lawns, compacted soils, and new sources of pollution (see Figure 2). In general, water runs off developed surfaces in higher volumes, at greater speeds, and carries with it a wider variety of pollutants than from undisturbed landscapes. Anything on the land surface such as automobile fluids,

litter, leaves, debris, sediment, fertilizers, pesticides, or animal feces is swept away by the runoff and carried directly into a waterway, often through storm drains and outfalls (the point where the storm drain pipe meets the receiving water).

Combined sewer overflows and other untreated discharges to a waterway are additional urban sources of pollutants. Excess nitrogen and phosphorus from fertilizers and sediment from eroded stream banks and exposed soils can have negative effects on the health and quality of water bodies. These pollutants can cause algal blooms, block sunlight, and decrease dissolved oxygen, all conditions which can kill aquatic plants and organisms. The Chesapeake Bay and its connected waterbodies have large hypoxic dead zones, void of oxygen and life due to pollutant overload.

Urbanization and development impact land and water in several ways:

- *During clearing and site preparation*, vegetation is stripped away leaving exposed soils that easily erode during rainfall events, causing an increase in sediment runoff into the water downstream. Erosion and Sediment Control (ESC) practices and products are used at this stage of development to reduce the amount of erosion occurring and the amount of sediment leaving the site.
- *Through construction and development*, impervious surfaces are created (roofs and paved surfaces), soil is compacted, infiltration is reduced, and runoff is increased. During storm events, pollutants wash off developed surfaces and are carried with runoff, which is the primary transport mechanism for pollutants such as sediment and nutrients. Pollutant loads will increase as the volume of runoff increases if prevention measures are not in place. Stormwater Best Management Practices (BMPs) are used at this stage of development to offset increases in runoff and provide treatment for pollutants.

## Stormwater Quantity Issues

Figure 5 illustrates one of the most fundamental concepts in urban stormwater — a *hydrograph* — which is a plot of stream discharge over time during a rainfall event. When comparing the pre-development and post-development hydrographs of a stream, and comparing the presence and absence of stormwater controls (BMPs), multiple impacts from urban development are observed:

- The amount or volume of runoff that flows into a stream increases as a result of urban development.
- Runoff reaches the stream more rapidly with urban development because it flows across hard surfaces and through pipes instead of being slowed down by going over and through vegetation first.

The blue line in Figure 5 shows a typical hydrograph from undisturbed land (pre-development).

After development, a typical urban hydrograph resembles the red hashed line. Note that in comparison, the red line exhibits a larger peak that occurs sooner in time. This is because traditional stormwater management for developed land functions by directing runoff into a system of drainage ditches and stormwater sewer pipes, which either discharge directly into local waterways or into a containment or pond area that stores the runoff and slowly releases water at the pre-development rate of discharge.

The volume of water entering (discharging to) local waterways from the pipes and ponds is greater and more focused than from undisturbed land. The increased runoff volume and focused nature of the discharge causes erosion and increased transport capacity for pollutants. To counteract the impacts of urbanization on streams, stormwater management now seeks to reduce runoff and replicate pre-development conditions (green dotted line) by installing practices that increase infiltration on site instead of storing the stormwater somewhere else. These practices are sometimes called “environmental site design” or “low-impact development” or “green infrastructure.”

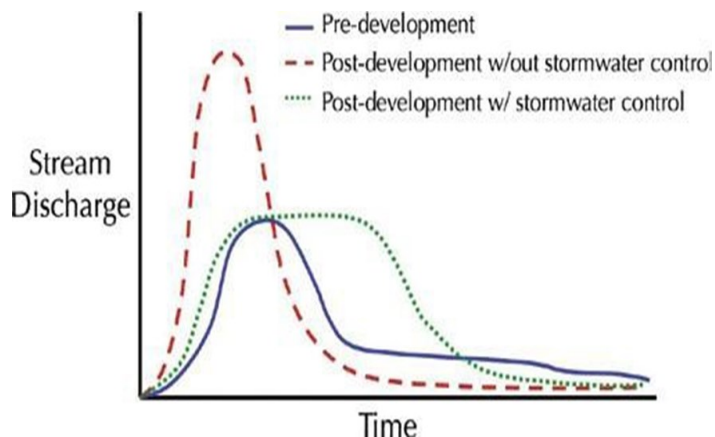


Figure 5. A typical urban hydrograph. Source: Adapted from Thompson, T.M. *Low Impact Development Presentation; Biological Systems Engineering, Virginia Polytechnic Institute and State University: Blacksburg, VA, USA, 2009.*

After the storm event has passed and the hydrograph returns to normal, the level of water in the stream is lower than what would be found under natural conditions. Without infiltration, groundwater recharge is reduced and water tables are lowered, often below the bottom of the streambed. Thus, groundwater flow into the stream has been reduced. The result is less or no groundwater inflow into a stream.

Figure 6 illustrates the net impact of these changes across an annual hydrologic cycle. The horizontal portion shows the continuum of urbanization from left to right, with natural ground cover on the left, moving through suburban, then urban development, to 75 to 100 percent imperviousness on the right. The top part of the figure shows the changes in evapotranspiration (ET), runoff, infiltration, and groundwater recharge (deep infiltration) as impervious area increases. Evapotranspiration decreases because there is less vegetation. Runoff significantly increases because water can't infiltrate. If stormwater can't infiltrate, then groundwater isn't recharged.

Figure 7 illustrates the subsequent geomorphic effects of urbanization on a receiving stream. A continuum of urbanization is shown from left to right. As development increases, significant changes occur. Runoff peak flows and frequencies increase. This results in increased erosion of the stream channel. It widens and deepens to accommodate the volume and velocity of stormwater.

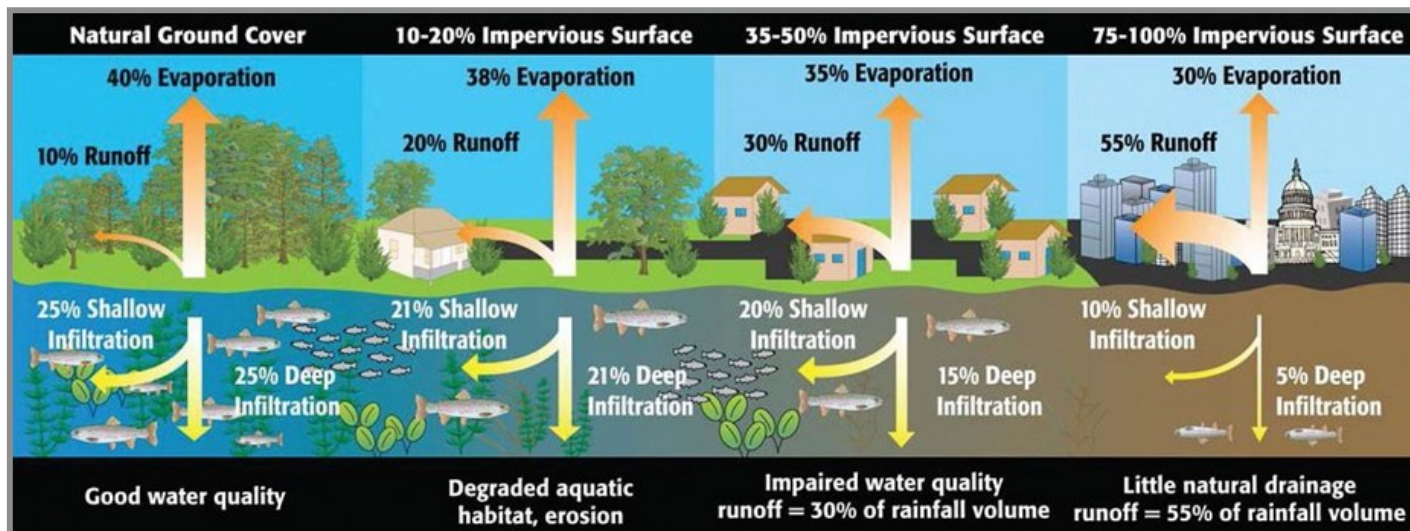


Figure 6. Changes in infiltration, evapotranspiration, and runoff with urbanization.

Source: EPA. Symbols courtesy of the Integration and Application Network ([ian.umces.edu/symbols/](http://ian.umces.edu/symbols/)), University of Maryland Center for Environmental Science. From "Potomac Conservancy State of the Nation's River, 2008."

Also, urban streams tend to dry out due to the lack of groundwater recharge resulting in a loss of stream length. The urban stream widens, deepens, and dries out, seriously impacting or destroying aquatic ecosystems and associated green infrastructure.

The relationship between impervious surfaces, watershed health, and stream ecology is the basis of the Impervious Cover (or surface) Model first proposed by Tom Schueler in 1994 (Chesapeake Stormwater Network, <http://chesapeakestormwater.net/2009/11/the-reformulated-impervious-cover-model/>). In the Chesapeake region, site design, erosion and sediment control, and stormwater management regulations and practices are required to reduce and control runoff to minimize the impacts of urbanization on watershed health, stream channels, and stream ecology.

### Stormwater Quality Issues

Untreated and uncontrolled stormwater from developed lands results in higher stream flows with increased stream erosion and higher concentrations (loads) of sediment, nutrients (nitrogen and phosphorus), and other pollutants in downstream receiving waters and eventually the Chesapeake Bay. This can degrade water quality and impact watershed health.

When receiving waters deteriorate to the point of not meeting their designated use, they are listed as "impaired." Typical designated uses in Chesapeake Bay tidal areas include: migratory fish spawning and nursery, shallow-water, open-water fish and shellfish, deep-water seasonal fish and shellfish, and deep channel seasonal refuge. Typical designated uses in non-tidal areas may include fish consumption, recreation, water supply, and aquatic life.

Additional designated uses and use classes are determined by each state. Once a stream is classified as impaired for one or more of these designated uses, several steps are taken by the federal and state regulatory agencies to comply with the Clean Water Act. A Watershed Implementation Plan is developed that helps guide restoration activities within the watershed. Necessary actions could include implementing green infrastructure to reduce stormwater impacts, new development rules that protect natural spaces, upgrades to wastewater treatment plants, or improvements on agricultural land. This impacts everyone locally as well as the water bodies that are downstream. Nitrogen, phosphorus, and sediment are the primary pollutants of concern in the Chesapeake Bay watershed. Figure 8 depicts the proportional nitrogen and phosphorus loadings, respectively, from different land uses in the Chesapeake region.

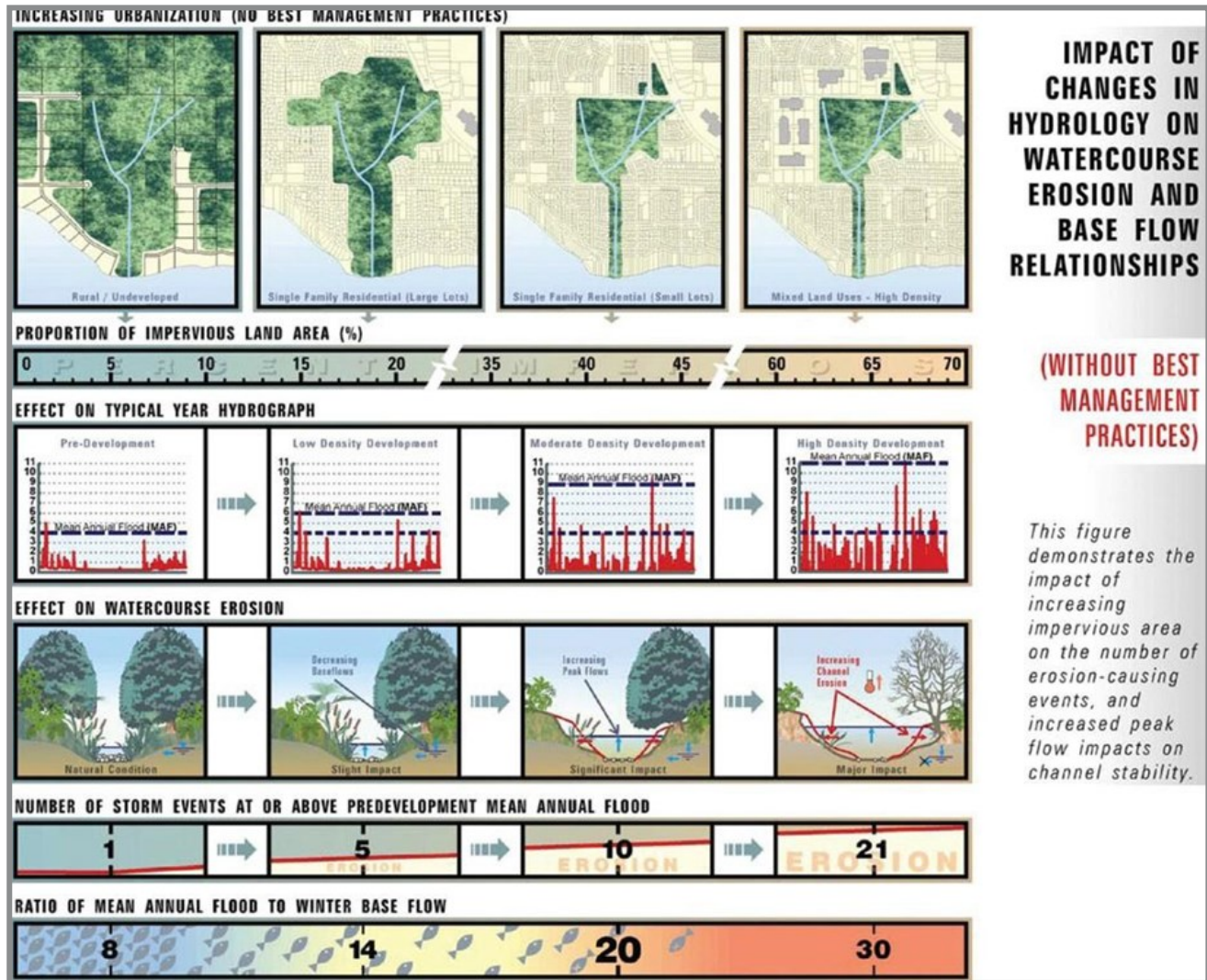


Figure 7. Urbanization and its effect on stream geomorphology. Source: Ministry of Water, Land and Air Protection, Copyright 2002 Province of British Columbia. All rights reserved. Reprinted with permission of the Province of British Columbia.

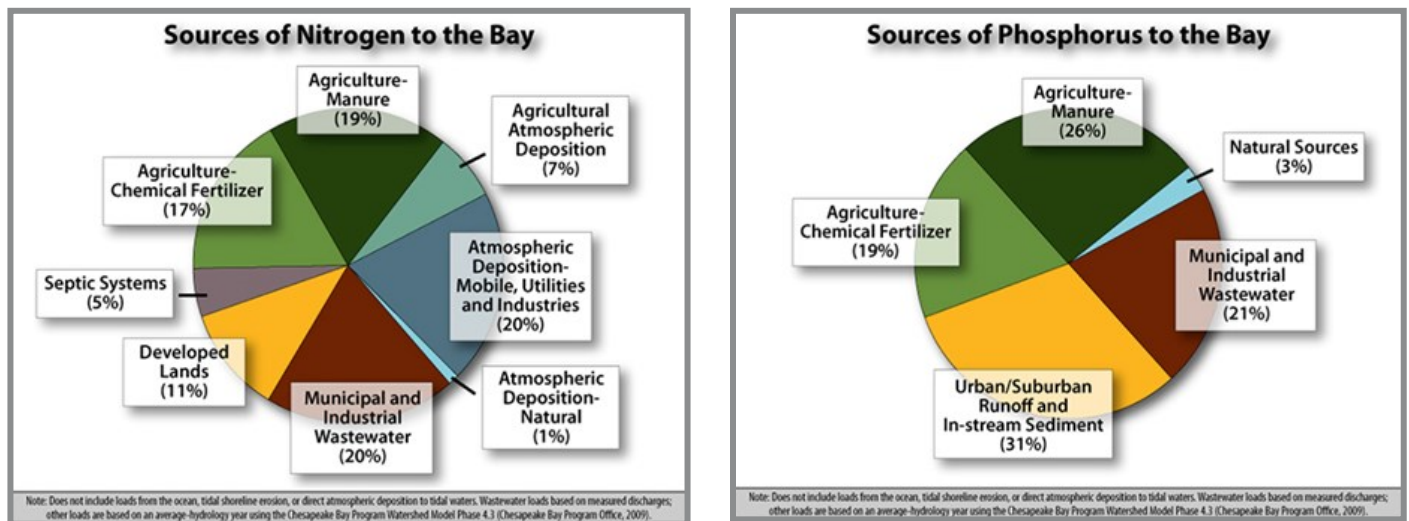


Figure 8. Sources of Nitrogen and Phosphorus in the Chesapeake Bay Watershed. Source: Chesapeake Bay Program, Question of the Week blog post, 12/11/09.

Once a rich and productive estuary, the health of the Chesapeake Bay has declined due in large part to pollution carried by stormwater runoff and generated from urban and industrial development and agricultural practices throughout the watershed. Within the Bay and its tributaries, sediment, nutrients, toxic chemicals, and other pollutants cause a variety of problems such as excess algae growth, reduced dissolved oxygen levels, and decreased water clarity. Figure 9 illustrates this process.

Unhealthy waterways mean a reduction in the fish and shellfish that support the livelihoods of local watermen and supply local restaurants. It also means that water becomes less desirable for recreation; that in turn, threatens local economies that depend on tourism. Public health, drinking water costs, and property values are also negatively affected by poor water quality.

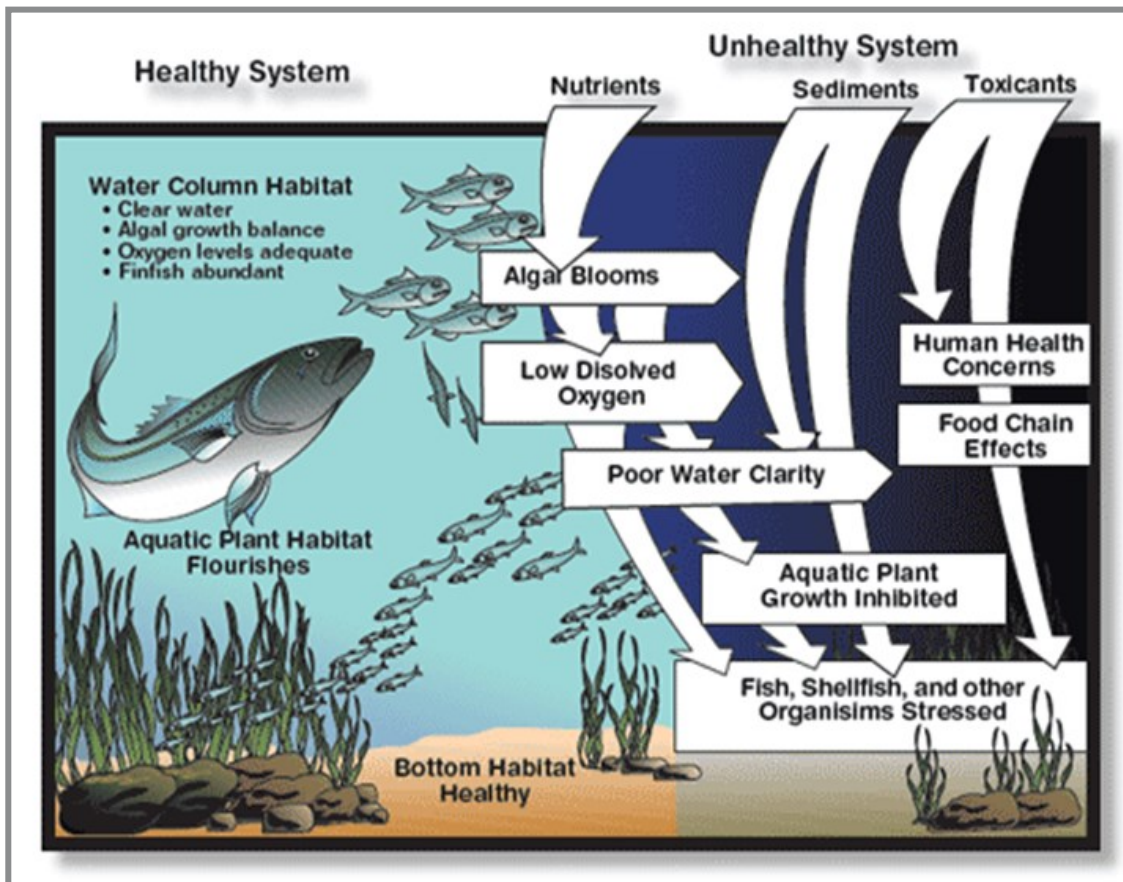
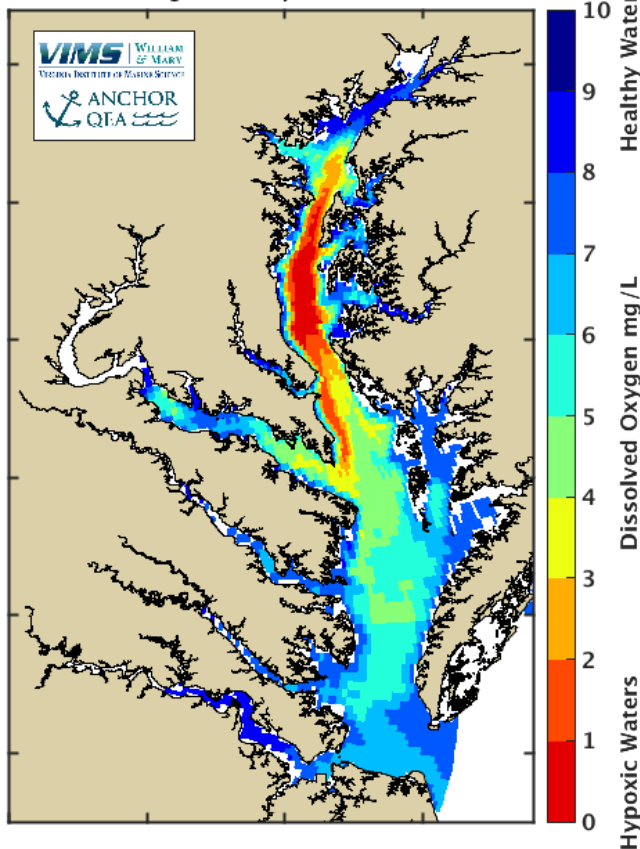


Figure 9. Conceptual model of Chesapeake Bay ecosystem health. Source: *What is a watershed?* Virginia Cooperative Extension Publication 426-041.

Once the algae consume all the nutrients, the algae die and use up the oxygen in the water through decomposition, causing large anoxic or dead zones to develop (Figure 10). This causes stress to the aquatic ecosystem. Sediment clouds the water, reducing clarity and coating the underwater vegetation. Light cannot get through. The plants cannot photosynthesize and begin dying off. Without plants, the fish, shellfish and other organisms become stressed and eventually move out of the area or die.

A key means of assessing stream health is evaluating the diversity, number, and health of benthic macro-invertebrates. These small organisms serve as an indicator of conditions in the stream and the upstream watershed, similar to a canary in a coal mine. In the Chesapeake Bay region, periodic measurements are made of stream health, and are mapped by watershed (Figure 11). Those that are unhealthy and unable to support a healthy aquatic ecosystem are shown in red while healthy, productive streams are shown in green. The majority of the streams and watersheds in the Bay watershed are considered impaired.

**Bottom Oxygen: Forecast  
June 26, 2020**



*Figure 10. June 2020 Chesapeake Bay dead zones. Source: Virginia Institute of Marine Science ([https://www.vims.edu/research/topics/dead\\_zones/forecasts/cbay/index.php](https://www.vims.edu/research/topics/dead_zones/forecasts/cbay/index.php))*

*Figure 11. Stream health 2000-2010 in Chesapeake Bay watersheds. Source: Chesapeake Bay Program*

Efforts to improve the water quality in streams, rivers, and the Chesapeake Bay are ongoing through numerous organizations and agencies. The overall health of the Bay is assessed each year, and the results are published as part of the “Bay Report Card.” Figure 12 provides a recent assessment of water quality and ecosystem health of the Bay estuary.

Urban Stormwater is the only sector that is increasing in nitrogen and phosphorous inputs, which is why it has received regulatory attention. Thus, stormwater management in the landscape needs to focus on reducing pollution that runs off urban areas to receiving waters and the Chesapeake Bay.

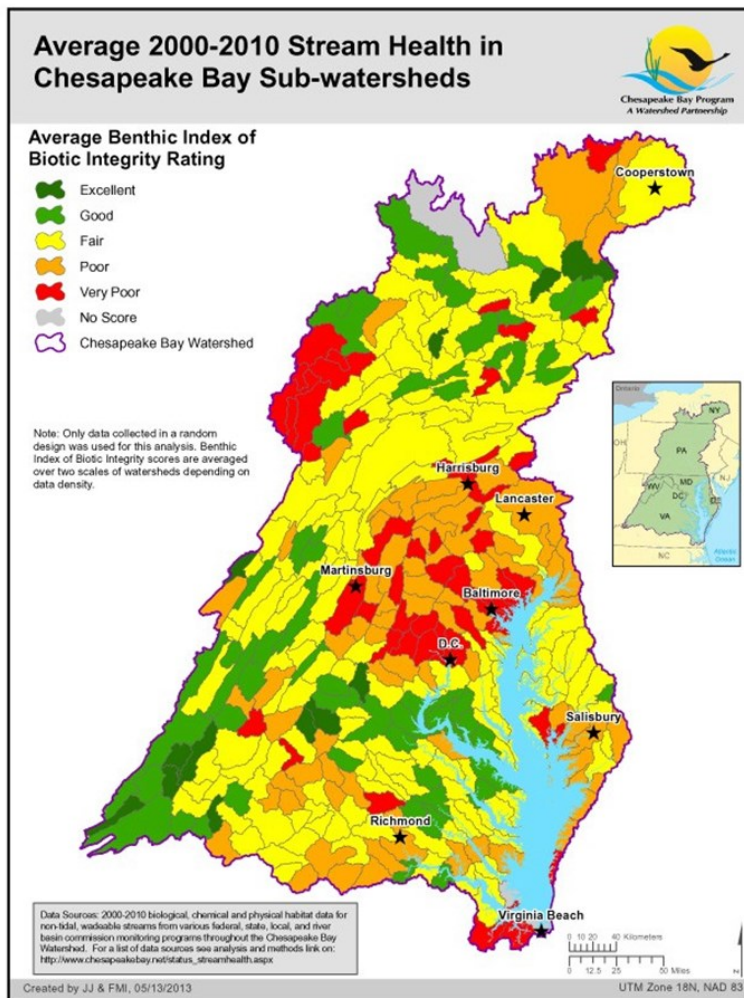
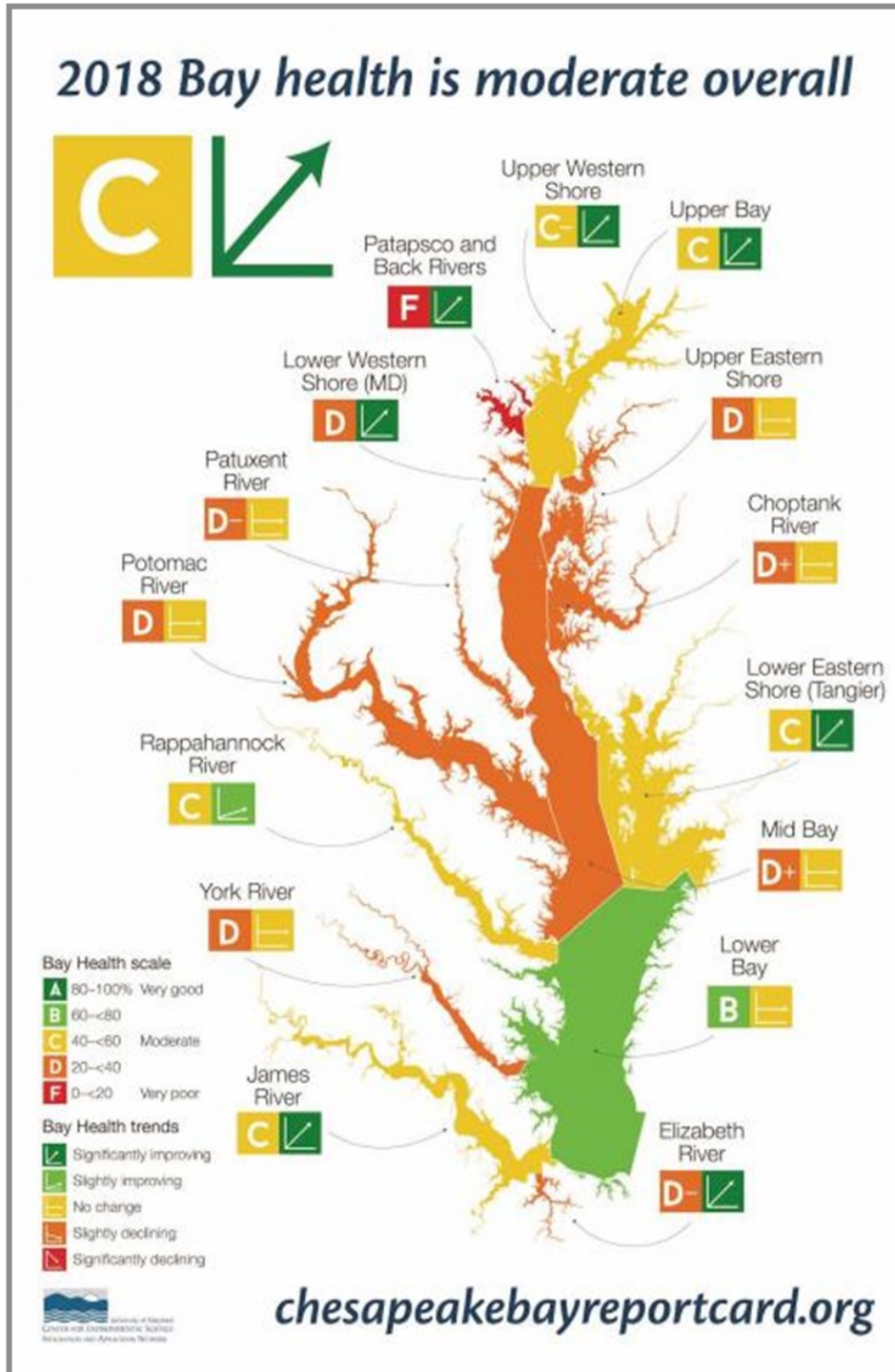


Figure 12: Chesapeake Bay Report Card 2018.  
 Source: University of Maryland Center for Environmental Science (UMCES)



## Managing Urban Stormwater

### At the National and Regional Level

The federal Clean Water Act (CWA) created in 1972, regulates discharges of pollutants into water bodies of the U.S. and provides for the establishment of water quality standards. To achieve the goal of clean and healthy waters that support aquatic life and recreation, the CWA created programs designed to regulate and reduce the amount of pollution entering United States waters.

One such program is Section 303(d) of the CWA, which requires states to assess their waterbodies to identify those not meeting water quality standards. If a waterbody is not meeting standards, it is listed as impaired and reported to the U.S. Environmental Protection Agency (EPA). The state then develops a plan to clean up the impaired waterbody. This plan includes the development of a Total Maximum Daily Load (TMDL) for the pollutant(s) that were found to be the cause of the water quality violations.

A TMDL calculates the maximum amount of a specific pollutant that a waterbody can receive and still meet water quality standards. It also establishes a pollutant budget or “diet,” which allocates portions of the overall pollution load to the pollutant’s various sources. Just as a person can only eat a certain amount of calories in one day without harming their

health, a waterbody can only absorb so much of a pollutant without harming its health. More than 40,000 TMDLs are in place across the country for different watersheds.

In 2010, the EPA finalized the Chesapeake Bay TMDL that provides guidelines for restoring the health of the Bay’s waters by defining pollution reduction goals or “pollution diets” for nitrogen, phosphorus, and sediment by 2025. The Bay TMDL is unique in that it requires jurisdictions within the Bay watershed to develop Watershed Implementation Plans (WIPs) that propose the allocation of nitrogen, phosphorus, and sediment loads to sources or sectors (e.g. agriculture, municipal wastewater systems, septic systems, and urban stormwater).

**Point sources of pollution:** Single, identifiable outputs of pollution to a waterbody. They may be publicly owned wastewater treatment works, privately owned treatment facilities, industrial discharges, and sometimes, large agricultural operations. (Modified from 40 CFR Ch. 1 Part D, Section 122.2)

**Nonpoint sources of pollution:** Polluted runoff primarily from urban, suburban, and developing areas and some agriculture sites. The numerous and diffuse nature of nonpoint sources make them difficult to regulate. Under the CWA, pollution from urban runoff is now more strictly regulated through permits for municipal separate storm sewer systems (MS4s) and construction projects. Other nonpoint source pollution problems have also been addressed through a variety of incentive programs.

(<https://oceanservice.noaa.gov/education/kits/pollution/02history.html>)

The WIPs must also describe the management steps jurisdictions intend to take to meet water quality standards. The WIPs developed by the states and approved by EPA provide a roadmap for how and when each jurisdiction intends to meet its pollutant allocations under the Bay TMDL. Each jurisdiction has been working with local governments to implement those WIPs and

achieve 60% of their TMDL goals by 2017 and 100% of the goals by 2025. Figure 13 provides an approximate assessment of the overall reductions in nitrogen, phosphorus, and sediment loadings needed to meet the 2025 goals. For instance, the James River watershed will need to meet reductions of 26% for nitrogen, 27% for phosphorus, and 27% for sediment. It will require a significant, multi-sector effort to meet these reductions.

The Chesapeake Bay Program (CBP) was established in 1983 as a regional partnership of federal and state agencies, local governments, non-profit organizations, and academic institutions that leads and directs Chesapeake Bay restoration and protection. In 2014, members of the CBP signed the Chesapeake Bay Watershed Agreement that established “goals and outcomes for restoration of the Chesapeake Bay, its tributaries and the land that surrounds them” (CBP <http://www.chesapeakebay.net/chesapeakebaywatershedagreement/page>).

Figure 14 shows implementable actions that local, state, and federal governments can take to meet Chesapeake Bay TMDL goals. Best management practices (BMPs) for the Chesapeake Bay region are approved by various technical, multi-stakeholder workgroups. The Urban Stormwater Workgroup recommendations, approved practices, and updates are posted on the Chesapeake Stormwater Network website at <http://chesapeakestormwater.net/bay-stormwater/urban-20stormwater-workgroup/>.

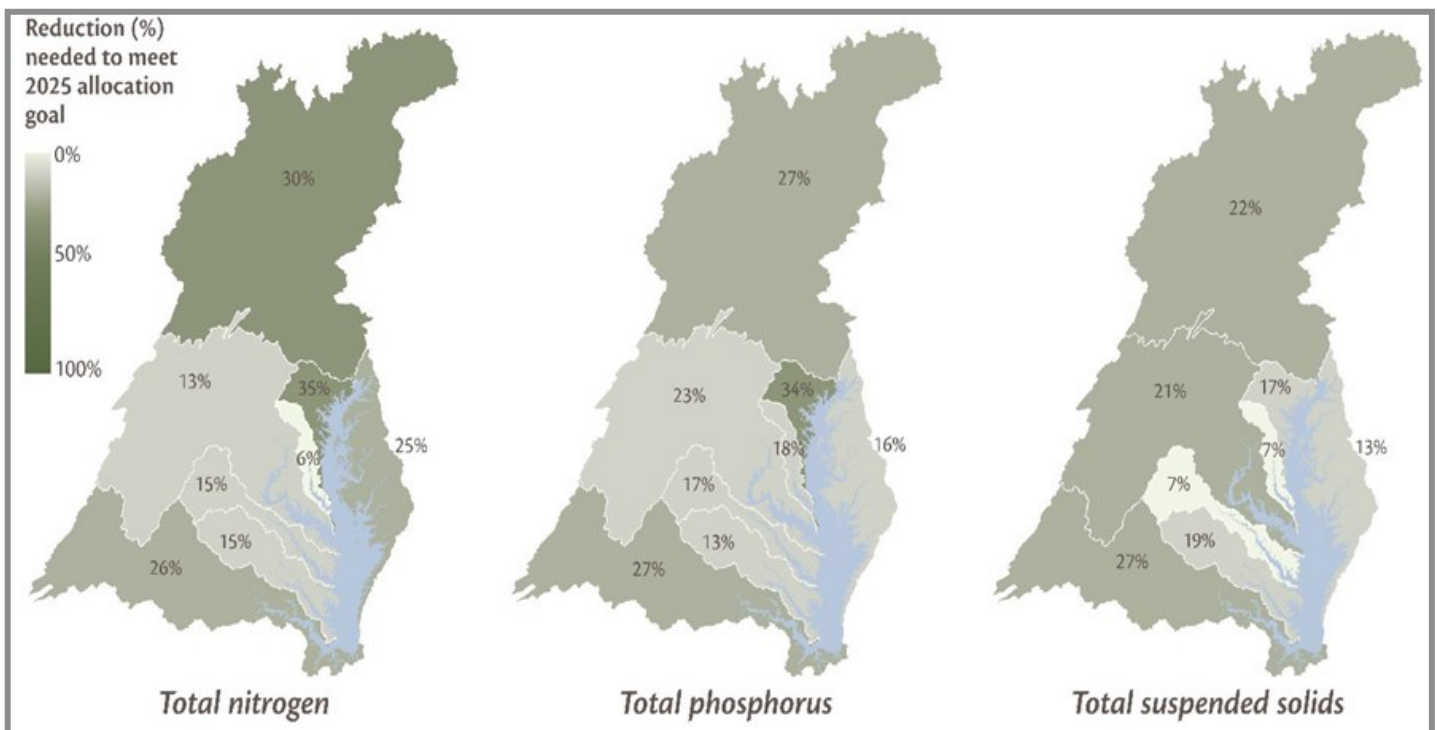


Figure 13. Nitrogen, phosphorus, and sediment reductions needed for compliance with the Chesapeake Bay TMDL in the 8 major Chesapeake Bay tributaries. Source: Chesapeake EcoCheck.

### At the State Level

At the state or jurisdiction level, state agencies manage and regulate water quality and stormwater programs through WIPs, TMDL action plans, permits from the National Pollutant Discharge Elimination System (NPDES), construction permits, and other environmental programs and strategies. Each state has established a list of approved actions, practices, guidance manuals, and minimum design standards to meet water quality goals. In general, most stormwater programs have shifted away from a conveyance, storage, and treatment approach toward a site design and stormwater management approach that prioritizes runoff reduction.

Table 1 is a summary of resources and links developed by the Chesapeake Stormwater Network for each Chesapeake Bay jurisdiction.

**Table 1.** Summary of resources for each Bay state. Source: Chesapeake Stormwater Network. <http://chesapeakestormwater.net/bay-stormwater/state-stormwater-policy/>



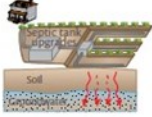



TMDL implementation actions	Example
Upgrade wastewater treatment plants (wwtpps)	Upgrading plants' technology to enhanced nutrient removal will remove more nutrients from wwtp discharges 
Install green infrastructure	Green roofs reduce heating and cooling costs and also stormwater runoff. 
Retrofit septic systems	New technologies allow bacteria to break down organic material and convert nitrogen to harmless gas. 
Additional controls on animal operations	Poultry and livestock waste structures prevent waste from running into local streams 
Additional controls on crop agricultural	Water control structures, wetland restoration, and increased nutrient management plan compliance decreases nutrient runoff 
New development rules	Larger riparian buffers with infiltration practices along waterfront developments will help to filter pollutants and reduce runoff. 

Figure 14. Examples of actions taken by governments to meet the Chesapeake Bay TMDL. Source: EcoCheck and Chesapeake Bay Program.

Bay Jurisdiction	Source of Stormwater Management Information	Links
District of Columbia	Storm Water Management Division:	<a href="https://doec.dc.gov/service/stormwater-management">https://doec.dc.gov/service/stormwater-management</a>
	WIP and TMDL Guidance:	<a href="https://doec.dc.gov/service/watershed-implementation-plans-chesapeake-bay">https://doec.dc.gov/service/watershed-implementation-plans-chesapeake-bay</a>
	Resources:	<a href="https://chesapeakestormwater.net/state-specific-resources/district-of-columbia/">https://chesapeakestormwater.net/state-specific-resources/district-of-columbia/</a>
Delaware	State Stormwater Department:	<a href="http://www.dnrec.delaware.gov/swc/pages/sedimentstormwater.aspx">http://www.dnrec.delaware.gov/swc/pages/sedimentstormwater.aspx</a>
	WIP and TMDL Guidance:	<a href="http://www.dnrec.delaware.gov/swc/wa/Pages/Chesapeake_WIP.aspx">http://www.dnrec.delaware.gov/swc/wa/Pages/Chesapeake_WIP.aspx</a>
	Resources:	<a href="https://chesapeakestormwater.net/state-specific-resources/delaware/">https://chesapeakestormwater.net/state-specific-resources/delaware/</a>
Maryland	State Stormwater Department:	<a href="https://mde.maryland.gov/programs/Water/StormwaterManagementProgram/Pages/index.aspx">https://mde.maryland.gov/programs/Water/StormwaterManagementProgram/Pages/index.aspx</a>
	WIP and TMDL Guidance:	<a href="https://mde.state.md.us/programs/Water/TMDL/TMDLImplementation/Pages/PhaseIIBayWIPDev.aspx">https://mde.state.md.us/programs/Water/TMDL/TMDLImplementation/Pages/PhaseIIBayWIPDev.aspx</a>
	Resources:	<a href="https://chesapeakestormwater.net/state-specific-resources/maryland/">https://chesapeakestormwater.net/state-specific-resources/maryland/</a>

Bay Jurisdiction	Source of Stormwater Management Information	Links
New York	State Stormwater Department:	<a href="http://www.dec.ny.gov/chemical/8468.html">http://www.dec.ny.gov/chemical/8468.html</a>
	WIP and TMDL Guidance:	<a href="http://www.dec.ny.gov/lands/33279.html">http://www.dec.ny.gov/lands/33279.html</a>
	Resources:	<a href="https://chesapeakestormwater.net/state-specific-resources/new-york/">https://chesapeakestormwater.net/state-specific-resources/new-york/</a>
Pennsylvania	State Stormwater Department:	<a href="https://www.dep.pa.gov/Business/Water/CleanWater/Pages/default.aspx">https://www.dep.pa.gov/Business/Water/CleanWater/Pages/default.aspx</a>
	WIP and TMDL Guidance:	<a href="https://www.dep.pa.gov/Business/Water/Pennsylvania%E2%80%99s%20Chesapeake%20Bay%20Program%20Office/Pages/default.aspx">https://www.dep.pa.gov/Business/Water/Pennsylvania%E2%80%99s%20Chesapeake%20Bay%20Program%20Office/Pages/default.aspx</a>
	Resources:	<a href="https://chesapeakestormwater.net/state-specific-resources/pennsylvania/">https://chesapeakestormwater.net/state-specific-resources/pennsylvania/</a>
Virginia	State Stormwater Department:	<a href="https://www.deq.virginia.gov/Programs/Water/StormwaterManagement.aspx">https://www.deq.virginia.gov/Programs/Water/StormwaterManagement.aspx</a>
	WIP and TMDL Guidance:	<a href="https://www.deq.virginia.gov/Programs/Water/ChesapeakeBay.aspx">https://www.deq.virginia.gov/Programs/Water/ChesapeakeBay.aspx</a>
	Resources:	<a href="https://chesapeakestormwater.net/state-specific-resources/virginia/">https://chesapeakestormwater.net/state-specific-resources/virginia/</a> <a href="https://www.swbmp.vwrrc.vt.edu/">https://www.swbmp.vwrrc.vt.edu/</a>
West Virginia	State Stormwater Department:	<a href="https://dep.wv.gov/WWE/Programs/nonptsource/Pages/NPS.aspx">https://dep.wv.gov/WWE/Programs/nonptsource/Pages/NPS.aspx</a>
	WIP and TMDL Guidance:	<a href="https://dep.wv.gov/WWE/watershed/wqmonitoring/Pages/ChesapeakeBay.aspx">https://dep.wv.gov/WWE/watershed/wqmonitoring/Pages/ChesapeakeBay.aspx</a>
	Resources:	<a href="https://chesapeakestormwater.net/state-specific-resources/west-virginia/">https://chesapeakestormwater.net/state-specific-resources/west-virginia/</a>

**At the Local Level**

Local governments are responsible for overseeing and complying with state and federal water quality and stormwater regulations and permits. Each local government has ordinances and permit requirements that dictate how land can be developed, used, and maintained. Many local government stormwater and water quality programs require the use of a combined site and stormwater design process known as the runoff reduction method (RRM) to ensure that pre-development runoff volume is maintained for new development (or exceeded in the case of redevelopment projects) and water quality goals are met as land is developed.

In addition to state level requirements, some counties, municipalities, or non-governmental organizations (NGOs) have developed watershed action plans for their specific regions either as part of or separate from a TMDL or MS4 permit. Urban localities plan and implement public green infrastructure projects like “green streets” and other stormwater retrofits for public and private properties to reduce and manage runoff from existing development that is currently untreated or inadequately treated by an existing stormwater system.

*“Green infrastructure uses vegetation, soils, and natural processes to manage water and create healthier urban environments. At the scale of a city or county, green infrastructure refers to the patchwork of natural areas that provide habitat, flood protection, cleaner air, and cleaner water. At the scale of a neighborhood or site, green infrastructure refers to stormwater management systems that mimic nature by soaking up and storing water.”*

*Source: [http://water.epa.gov/infrastructure/greeninfrastructure/gi\\_what.cfm](http://water.epa.gov/infrastructure/greeninfrastructure/gi_what.cfm)*

Local government, watershed groups and soil and water conservation districts may have cost-share programs to encourage the installation and maintenance of retrofits of residential, small commercial, and institutional properties to meet water quality goals and increase watershed stewardship. Check with local agencies or groups to see if any sites have been identified for such future projects. There may be an opportunity to leverage resources or share workload with local partners to design, install, and maintain these projects.

*“Stormwater retrofits are a diverse group of projects that provide nutrient and sediment reduction from existing development that is currently untreated or is inadequately treated by an existing stormwater practice.”*

*Source: CSN Good Recipes for the Bay Pollution Diet U-1 Urban Stormwater Retrofits.*

Before beginning work on a site, be aware that stormwater practice design standards and terms vary depending on state/region/locality. In addition, some commonly used BMPs approved by the Chesapeake Bay Program may not be appropriate because of karst (topography with sinkholes or caves) or high water table conditions. Consult with local jurisdictions or national program websites to learn about the specific terminology, definitions, and practices used in specific regions. Be sure to check the local codes and ordinances where a project is being installed.

### At the Site Level

Until recently, stormwater management at the site level focused exclusively on management of impervious areas and the use of stormwater treatment ponds. As our understanding of the impacts of impervious surfaces and non-point source pollution from urban areas has improved, stormwater management and site design has evolved and shifted toward managing runoff from both impervious and pervious urban areas at the watershed, development

parcel, and single-lot scales with the increase of the RRM process. RRM is a multi-step, iterative site and stormwater management design process that employs environmental site design (ESD) techniques to minimize the generation of runoff; promotes the use of runoff reduction (RR) stormwater practices that infiltrate, re-use and treat runoff; and utilizes pollutant removal or stormwater treatment (ST) practices to treat remaining loads (see Figure 15).

The RRM incorporates a spreadsheet-based methodology that estimates runoff volumes and pollutant loads associated with development, and the nutrient and sediment reductions provided by implementation of BMPs (Hirschman, 2008).

**Environmental Site Design (ESD):** *A comprehensive design strategy for maintaining predevelopment runoff characteristics and protecting natural resources. Relies on integrating site design, natural hydrology, and smaller stormwater practices to control, capture and treat runoff. (Ch. 5.0 Environmental Site Design, Maryland Department of the Environment)*

### Runoff reduction (RR)

*These practices reduce and treat runoff volume through infiltration, vegetation, absorption in media, storage and reuse. Site design or landscape restoration (non-structural) RR practices include rooftop/impervious surface disconnection, soil restoration and/or amendments, sheet flow through vegetated filter strips or conserved natural vegetation, reforestation, urban tree planting, buffer plantings, and replacing impervious surfaces or turf with conservation landscaping using native plants. Bioretention, dry swales, permeable hardscapes, green roofs, and cisterns are all forms of structural or constructed runoff reduction type stormwater BMPs used for new construction, redevelopment and stormwater retrofits. (Sample, David & Fox, Laurie.)*

### Stormwater Treatment (ST)

*These practices reduce pollution through physical means such as settling or filtering through media. Wetlands, sand filters, wet swales, and wet ponds are examples of this type of BMP. (Sample, David & Fox, Laurie.)*

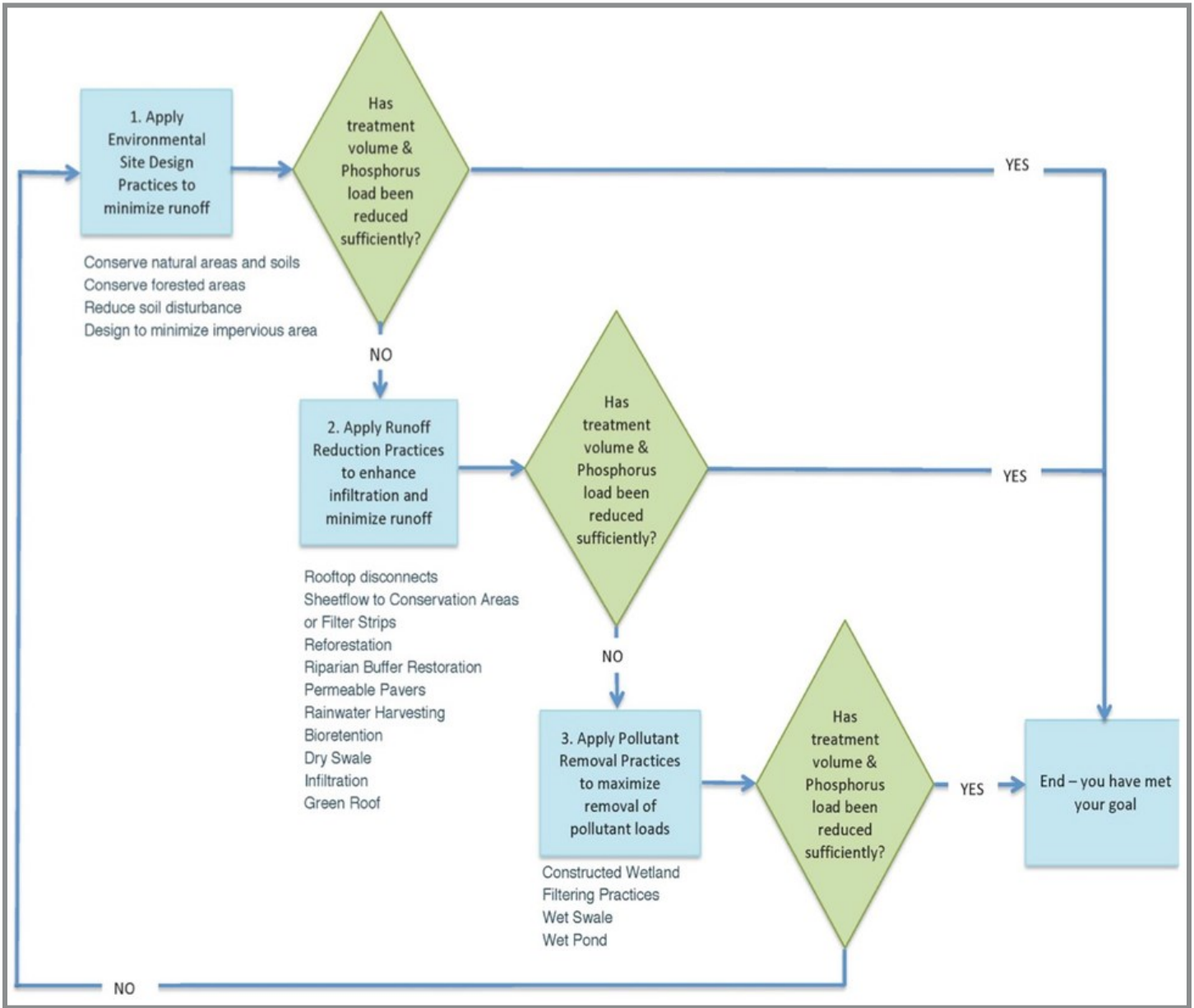


Figure 15. Application of the Runoff Reduction Method and Environmental Site Design. Source: Adapted from Chesapeake Stormwater Network Technical Bulletin No. 4 Technical Support for the Bay-wide Runoff Reduction

ESD techniques reduce runoff by minimizing site disturbance and impervious surface area while maximizing conservation practices and distributed small-scale stormwater RR practices. The techniques are integrated into the site and stormwater plans for new development or redevelopment projects through regulatory, land-use, and construction permitting processes or are integrated with grey infrastructure systems and into the landscape through landscape restoration or retrofitting existing properties.

Low impact development (LID), cluster development, conservation subdivisions, Better Site Design (BSD), Green Area Ratio (GAR), Leadership in Energy and Environmental Design (LEED), Sustainable SITES, and Living Building Challenge also use an ESD approach for new development and redevelopment sites. Cluster development or conservation subdivisions cluster buildings and maintain connectivity of green infrastructure to provide open space and protect natural resources and critical habitats. The net impact of all environmental site design techniques from a stormwater perspective is that impervious surfaces, urban runoff, and downstream impacts are minimized through the site design process.

Whether used for new construction, redevelopment, or a sustainable landscape restoration and retrofit of an existing property, ESD methods critically assess a property and design to preserve existing features of value and incorporate new features to enhance the natural processes and ecosystems of the site.

ESD methods are specifically designed to:

- Preserve, protect, expand, enhance, or restore existing valuable environmental features (e.g., forests, large or especially ecologically or aesthetically valuable individual trees, waterfront buffers, highly erodible soils, nesting areas, high water tables, waterways and wetlands, meadows, animal communities, areas of undisturbed native soils, rock formations, groundwater recharge)
- Minimize site grading and compacting of soils
- Enhance connection to adjoining natural areas
- Minimize impervious surfaces (e.g., pavement, concrete channels, roofs)
- Slow down runoff to mimic natural runoff rate and duration by infiltrating, storing, evaporating, and/or detaining runoff close to the source
- Minimize turf and lawn areas and include native plants, materials, or features that minimize the need for fertilizers and support biodiversity and wildlife.

**Low Impact Development (LID):** *An innovative storm-water management approach with a basic principle that is modeled after nature. It requires managing rainfall at the source using uniformly distributed, decentralized micro-scale green infrastructure or LID stormwater practices. The goal is to mimic a site’s predevelopment hydrology by using design and stormwater management techniques that infiltrate, filter, store, evaporate, and detain runoff close to its source. (LID Center, <http://www.lid-stormwater.net/background.htm>)*

**Green Area Ratio (GAR):** *specific to development projects in the District of Columbia, the GAR establishes planting ratio guidelines and requires submittal of a planting plan by a qualified landscape professional. <https://doec.dc.gov/service/green-area-ratio-overview>.*

Once this is accomplished through site design, the next step in the iterative RRM is to select RR practices for runoff volume reduction and treatment. The final step is to incorporate the use of ST practices (if needed) to ensure that the combined site design and stormwater practices will meet the treatment volume and pollution reduction goals.

For developed or urbanized areas where runoff is untreated or inadequately treated, stormwater retrofits are incorporated into the landscape and streetscape as new green infrastructure, LID practices, or through conversion of an old storage-type practice, like stormwater ponds, to better performing infiltration practices, like constructed wetlands. Practices implemented through a government agency to retrofit an existing stormwater system for an MS4 permit or to address combined sewer overflows (CSOs) are typically designed and implemented by the locality or specialized contractors through a regulatory and permitting process.

A select group of small-scale and on-lot practices, known as residential stewardship practices (rain gardens, impervious cover removal, rainwater harvesting, downspout redirection, pervious hardscapes, urban nutrient management, tree planting) are approved by the CBP for nutrient reduction credit on residential, small commercial, and small institutional properties if properly designed, installed and maintained by the property owner, a local non-profit, or a landscape professional. Design and implementation of these residential stewardship practices may be promoted and overseen by local governments or watershed groups. These practices may require permits based on the individual site and practice type, the presence of environmentally sensitive and protected features, and the amount of disturbance required to implement the practice. Local jurisdictions and watershed groups can help determine which practices are suitable on which sites and if any special design criteria may be required locally. Some jurisdictions promote and/or financially incentivize the installation and maintenance of select BMPs. Ensure that the local jurisdiction is aware of the design and installation of stormwater BMPs so credit can be given toward meeting state and federal pollution reduction goals.

## Stormwater Best Management Practices (BMPs)

The type of project (new development, redevelopment, retrofit), the intended use, state and local stormwater regulations, and site-specific characteristics identified through a detailed site assessment and RRM analysis will dictate which stormwater practices are best for each project. Each state has approved BMPs for new construction and redevelopment projects. The Chesapeake Bay Program has approved certain post-construction BMPs as stormwater retrofits and established minimum standards and protocols that must be followed for localities to get nutrient and sediment reduction credits toward the Chesapeake Bay TMDL (Bahr et al, 2012).

Tables 2 and 3 provide details and images for each practice approved by the Chesapeake Bay Program for use in the Chesapeake Bay region. Table 2 includes a brief description, performance data, and the type of practice. Table 3 includes construction diagrams and photographs of each practice. The BMPs listed and diagrams provided in these tables are compiled from several sources available for public use, including the Virginia Stormwater BMP Clearinghouse website (VDEQ 2013) and the Chesapeake Stormwater Network.

In addition to ESD, RR and ST, other downstream restoration (DR) practices can be installed to “fix” problems caused by high runoff volume and pollutant loads. A number of private companies have also developed proprietary BMPs. When stormwater is not controlled on site, stream banks and shorelines can become damaged by the increased flow of water moving through the system. To minimize the impact or to reverse the damage, DR practices such as stream restoration or living shorelines can be used. It is important to install stormwater management practices including riparian buffers upland as well, to ensure that these downstream restoration practices have a chance to succeed.

Stream restoration is the practice of creating a stable stream system using structures that divert the flow to the center of the stream while protecting the banks from highly erosive forces. Often this can mean reconnecting the stream to its floodplain so that energy is dissipated across a larger area. A riparian buffer should be planted along the stream edge to reinforce the engineered project and to provide other ecological benefits. In low-energy areas, living shorelines and shoreline buffers can be established by planting vegetation along tidal edges to help minimize erosion.

Hybrid forms of living shorelines incorporate the use of bioengineering materials (e.g. rock or oyster sills or breakwaters) to help absorb the erosive forces of waves and protect the soil and vegetation.

Proprietary BMP systems are developed by specific manufacturers and utilize a variety of treatment technologies to remove pollutants from urban runoff. Tree boxes, filter systems, floating wetlands, and living walls are forms of proprietary BMPs used in the Chesapeake Bay Region. Proprietary BMPs should be examined individually because limited unbiased information is available.

### Site Assessment/Design Process

As stormwater programs have shifted toward management of both pervious and impervious urban areas, assessing site landscaping practices and their potential impact on downstream water quality provides useful information for the landscape professional. This assessment applies the knowledge of the previous sections but it is presented at the single lot scale and from a practical perspective.

#### Associated BMP Design Terminology

**Pre-development hydrology:** *Refers to the way in which a naturally vegetated area handles precipitation and is an important goal for sustainable and environmentally thoughtful design. (Source: [deeproot.com blog post](http://deeproot.com/blog/post/Maintaining-Pre-Development-Hydrology) “Maintaining Pre-Development Hydrology.” Sept. 19, 2011).*

**Physical properties of soil:** *Texture, structure, permeability, porosity.*

**Design storm:** *A rainfall event of specified size and return frequency (e.g., a storm that occurs only once every 2 years) that is used to calculate the runoff volume and peak discharge rate to a BMP. (Schueler, 1992)*

**Stormwater detention:** *A structure designed to manage and store excess runoff on a developed site, often in an urban setting.*

**Runoff volume:** *Volume of rainfall that flows off pervious and impervious areas of a site for a design storm event.*

**Runoff reduction or treatment volume:** *Total annual runoff volume reduced through canopy interception, soil infiltration, evaporation, rainfall harvesting, engineered infiltration, extended filtration or evapotranspiration. (Chesapeake Stormwater Network, 2012).*

**Contributing drainage area:** *All stormwater practices are designed to receive, store, or treat runoff from a discrete area of land or a rooftop known as the contributing drainage area. The volume of water that a practice manages is calculated from the amount of runoff generated by a design storm from the contributing drainage area.*

Addressing the following questions and issues can provide insight on how the site will perform. Adapted from Shelton and Feehan (2008) and Anne Arundel County (2016).

### Where Does Stormwater Go?

Sustainable landscapes use environmental site design and green infrastructure/LID-type stormwater BMPs to work with nature and the unique characteristics of a site. When working on a stormwater retrofit and landscape restoration plan for a site, it is important to look holistically at how the site was originally designed, how it functions, and how stormwater management can be integrated into the design and goals of the site while also keeping other environmental benefits of the site intact.

A site assessment is the critical first step in site planning. It guides the selection of practices used on the site and informs the property owner who uses and maintains that site. The following are steps for assessing a residential, small commercial, or small institutional property to create a site plan that will guide design decisions and practice selection:

- Measure lot boundaries and buildings or obtain a copy of a recent survey of the site. Figure 16 provides an example of a simple site plan without topography.
- Include topographical information if it is available, but a visual survey of the high and low spots on the site can suffice. The home or property owner can also provide information about where water flows and pools during heavy rain events.
- Identify impervious areas such as buildings, parking areas, sidewalks, patios, pools, decks, and driveways and how they drain (or if a drain is present).
- Show areas of steep slopes.
- Identify soil types based on soil test information, local soil maps, or Web Soil Survey.
- Conduct soil infiltration tests to determine the rate of infiltration at potential project sites.
- Mark and characterize landscaped and vegetated areas.
- Identify sensitive areas such as creeks, ditches, lakes, wetlands, storm drains, buffers, etc. which usually receive runoff from the site.
- Mark runoff paths and flow directions.
- Identify where the runoff leaves the site to adjacent receiving waters, storm drains, and neighboring sites.
- Talk with property owner(s) to determine their preferences for how the property is used, areas of recreation, frequently traveled pathways, aesthetics, their interest and ability to

conduct the required maintenance, etc.

- Contact your soil and water conservation districts, municipal or county planning, environmental or public works department, or state environmental agency for guidance (see Figure 17).
- Check with local erosion and sediment control or planning agencies to determine permitting requirements for soil disturbance, wetlands, Resource Protection or Critical Area, protected species, and buffers.
- Call the local utility locator (e.g., MISS UTILITY, PA

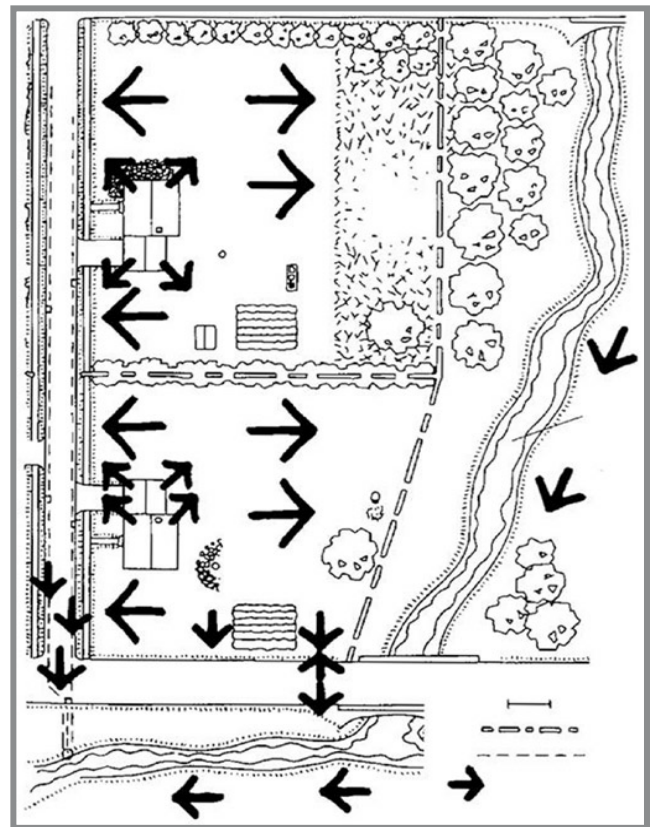


Figure 16. Simple site plan. Source: Shelton and Feehan 2008.

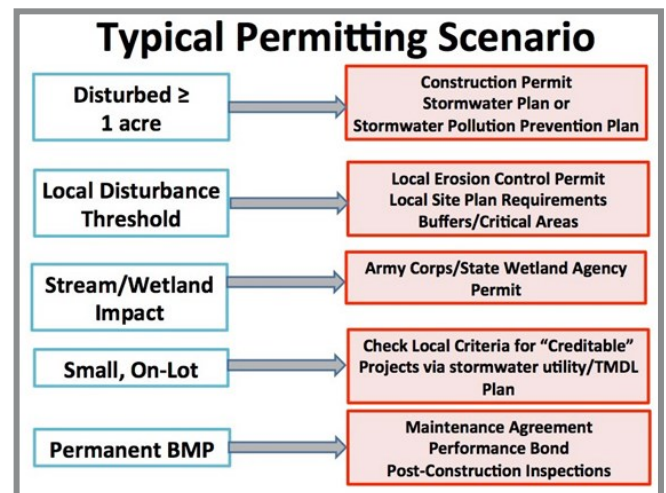


Figure 17. Typical Permitting Scenario. Source: David Hirschman.

## Can the Landscape Layout Be Designed or Redesigned to Reduce Runoff?

Reference the site analysis. Minimize disturbance to natural features and incorporate sustainable landscape restoration practices such as restoring compacted soils, urban tree planting, reforestation, buffer restoration, or conservation landscaping beds of native plants instead of turf or impervious surfaces. Determine if there are problem areas where the runoff is too concentrated (i.e., many arrows coming together). Incorporate practices that slow down, spread out, and soak in the runoff. It is always a good practice to reduce runoff, especially if your runoff is ending up on neighboring sites.

## Does Roof Water Flow to Pavement or Landscaped Areas?

The impact of an impervious roof on the drainage of a site cannot be overstated. When runoff from roofs via gutters and downspouts directly flows onto pavement, runoff peak flows increase as does the potential for downstream degradation.

- Redirect downspouts and drain them onto a vegetated area or into a rain barrel or rain garden. A rain barrel or cistern can provide a supplemental irrigation source during dry periods.
- Install a green roof. Most buildings **cannot** be retrofitted for a green roof without structural improvements, so this practice applies mainly to additions or new buildings.

## Can Paved Surfaces Be Reduced?

On most sites, the controllable impervious areas include sidewalks, porches, patios, decks, and driveways:

- Reduce the total square footage of the impervious area and replace with a pervious surface.
- Consider a driveway that uses pavement for the tire tracks only, with turf or gravel in between.
- Use permeable hardscapes and/or paver systems. There are many new products available that allow water infiltration directly through the pavement or through joints. Remember these systems must be

vacuumed to keep pore spaces from clogging and often require the involvement of a certified and trained paving professional for installation.

- Consider using stepping stones or mulched or vegetated paths or walks. Some groundcovers can tolerate foot traffic.
- Use wider seams or joints on decks and patios for better water infiltration.
- If paved surfaces can't be reduced, consider directing runoff from these areas to a filter strip, a conservation landscape area of native plants or grass, or into a rain garden or swale planted with native vegetation. On older commercial or small institutional properties, runoff from parking areas is often untreated. This provides opportunities for sustainable landscape restoration and small-scale stormwater retrofits.

## Construction Considerations

Before initiating construction on any site, ensure the project complies with all permitting and plan review requirements. Unlike conventional landscaping, sustainable landscape and BMP practice construction must be conducted in an environmentally sensitive way to protect natural resources before and during construction and to eliminate common causes of stormwater practice failure caused by soil compaction or sedimentation during the practice installation.

- Protect existing vegetation, wetlands, buffers, soils, habitat, and water resources during construction.
- Prevent contamination or damage during construction. Keep equipment in good working order and clean up any spills or leaks. Minimize equipment in the BMP to avoid damage or compaction.
- During landscape or BMP construction, ensure that the installation team is trained in site protection measures including erosion control practices.
- Clearly designate protected areas, enforce compliance within those areas, and inspect protection measures during construction.
- Refer to the tree protection plan and perform any required "root pruning," pruning of canopy, or other preservation measures specified in the plan.

- Remove only the trees or other vegetation slated to be removed.
- Maintain required depth of mulch over tree roots, and provide supplemental water in accordance with preservation measures.
- Use appropriate construction machinery - lightest, least destructive (tires versus tracks) equipment possible during site or BMP construction.
- If topsoil must be disturbed, stockpile and reuse it on site.
- Provide temporary protection on site just after construction.

It is vital that stormwater practices be maintained in working order so they function as intended, providing protection and stormwater management for our homes, neighborhoods, parks, schools, and businesses. All practices must have a long-term maintenance plan in place at the end of the installation. A good reference for this is Sustainable Landscape Maintenance for the Chesapeake Bay Watershed by Cheryl Corson, found here: <https://cblpro.org/downloads/CBLPMaintenanceManual.pdf>.

### **Landscape Site Management for Source Control of Runoff**

There are many practices that can be used by the sustainable landscape professional to reduce pollutants in runoff through reducing or controlling the source. Urban nutrient management techniques and fertilizer limitations as well as erosion and sediment control are source control methods.

The following guidance is designed to assist in assessing the need for source control methods and the relative risk of a site for urban water quality issues from erosion and other pollutants.

### **Cover Bare Soil**

Soil left exposed without vegetative cover easily erodes. When erosion occurs, sediment is transported downstream through runoff. Excess sediment clogs storm drains and reduces channel conveyance capacity, causing flooding. It also buries and destroys downstream underwater habitats, depriving fish of their food sources and living areas. These issues can be easily avoided.

- Overseed bare spots in turf or plant bare areas in beds. Aeration may be necessary on compacted areas.
- Use native ground covers if turf will not grow or is not desired.
- Use mulch if vegetation will not grow or is not desired.
- Vegetative buffers can be used along sloped or downhill portions of the site.

### **Minimize Yard and Garden Wastes**

Disposing of leaves, grass clippings, branches, and other yard debris in ditches and storm drains is a common practice that clogs drainage systems, causes flooding, increases organic loading downstream, and in some cases, violates local ordinances. Most urban runoff is discharged untreated to receiving waters. As the organic matter from yard debris decomposes in streams, lakes, and estuaries, it depletes oxygen in the water and can cause fish kills. Nutrients from the organic matter also cause algal blooms and aquatic weed growth which lead to an imbalance in the ecosystem.

To avoid these problems:

- Sweep/collect yard debris off streets, sidewalks, and driveways.
- Dispose of debris in a compost pile or through a curbside pickup service.
- Use a mulching mower to recycle grass clippings and nutrients to the lawn.
- Use compost instead of fertilizer.

### **Use Integrated Pest Management Techniques to Minimize the Need for Pesticides and Handle Pesticides Safely**

A wide variety of pesticides are available for use in landscapes; however, a sustainable landscape professional avoids or minimizes the use of pesticides through Integrated Pest Management (IPM). Many state Extension agencies provide IPM guidance and training and additional information.

*“IPM is a natural systems approach, using the least harmful methods of managing all types of landscape pests including insects, weeds, plant pathogens or vertebrates. IPM refers to protecting biodiversity and habitat by minimizing the use of pesticides.” (Source: Cheryl Corson, Sustainable Landscape Maintenance for the Chesapeake Bay Watershed)*

If pesticides must be used:

- Always follow the label instructions. The label is the law!
- Scout regularly to catch problems early so there is less input for whatever treatment is used.
- Have and maintain a Pesticide Applicator License.
- Keep an updated record of the products used on a site.
- Store all products in a dry and secure location and keep an updated inventory list.
- Hire certified pesticide applicators when necessary, especially when applying products near bodies of water.
- Avoid applications before a rain or irrigation cycle to prevent runoff contamination.
- Immediately clean up any spills or residues on impervious surfaces and dispose of them properly.
- Purchase only what is needed to avoid storing large amounts.
- Treat only when necessary and with the least-toxic product.
- Consider alternative management practices to pesticides such as cultural, mechanical, or biological methods.
- Promote beneficial insects and natural predators in the landscape to minimize pesticide applications.

### **Minimize the Use of Fertilizers and Use Appropriately**

There are specific fertilizer laws and requirements that vary by state including the need for a commercial fertilizer applicator’s license or certificate. Check with state Extension services before developing a fertilizer or urban

nutrient management plan.

An example of nutrient contamination from fertilizers is commonly seen with stormwater retention ponds in developments. In adjacent landscapes, especially turf areas, excess or misapplied fertilizer runs off before plants can absorb it and causes algae blooms and aquatic weed growth. These plants typically have short life cycles, and when they die and decay, they deplete oxygen needed for aquatic organisms and sometimes release substances that are toxic to aquatic organisms. They also look bad and can block or clog outflows.

- Test soil to determine the fertilizer need (every three years is recommended).
- Use a slow-release fertilizer instead of multiple applications of a quick-release or water soluble product.
- Apply the total amount recommended in a split application.
- Apply at the correct time for the plants to use it most efficiently.
- Don’t use a complete fertilizer (containing N, P, and K) if it isn’t necessary or allowed.
- Consider an organic product instead of a synthetic product.
- Remove fertilizer from impervious surfaces such as driveways and sidewalks.
- Contact the local cooperative Extension office for information on plants, environmental conditions, and educational programs.

*The Chesapeake Bay Program has approved Urban Nutrient Management (UNM) as an urban stormwater BMP. The UNM BMP is a collection of environmental site design and landscape management practices that address lawn or turf care and nutrient management for the total landscape.*

*Sustainable landscape professionals can work with their clients to implement these practices on private property, then clients sign a pledge to manage their landscape with the UNM practices. Local governments can then get nutrient and sediment reduction credits to meet their TMDL goals.*

## Manage Car and Truck Waste

In addition to nitrogen, phosphorus and sediment, fluids and residues from our vehicles and landscape maintenance equipment can be significant pollutants. Used oil from a single oil change can contaminate a large quantity of runoff. Antifreeze is toxic to aquatic organisms and can shut down the kidneys of mammals. Brake dust and tire bits contain toxic metals. Soaps used in car washing contain surfactants that threaten aquatic habitat. Exhaust from equipment and vehicles also contribute to air pollution and greenhouse gases.

- Maintain vehicles and equipment to prevent leaks.
- Immediately and thoroughly clean up spills.
- Wash vehicles on the lawn or at a car wash with environmentally friendly products.
- Collect spent fluids, waste oils, solvents, etc., and dispose of properly. Many communities have household hazardous waste collection days for these materials.

## Dispose of Animal Waste

Domestic animals and pets provide companionship and recreation. However, animals produce waste that can contain high concentrations of nitrogen, phosphorus, and harmful pathogens. When this waste contaminates runoff, it can cause human health hazards for recreational and drinking waters downstream. The economic impact on a community is significant when drinking water resources are compromised or recreational activities involving water are banned and beaches closed.

- Pick up pet waste and dispose of it properly. Many communities have “scoop the poop” programs.
- Compost animal waste. Compost systems are good for treating waste from many animals or from larger animals such as horses.

## Consider Alternatives to Salt or Other De-Icing Products

In order to cope with winter weather, salt and de-icing products are often used. These can be toxic to aquatic organisms and plants. Salts can be corrosive to water pumps and pipes and build up in receiving waters. Because most salts are untreated except for dilution, they can cause issues in drinking water supplies downstream.

- Manually clear snow from impervious surfaces and drains.
- Consider using alternative products such as sand or kitty litter.
- Use as little salt and alternative products as possible. Are there areas that do not need to be thawed? Will the weather be warming up quickly enough that deicers are not needed?

## Acknowledgements

Much of the content and many of the figures come from several existing publications developed by the authors for the Virginia Department of Conservation and Recreation Urban Nutrient Management Certification Program, Virginia Extension, University of Maryland Sea Grant Extension, and Penn State Extension. The authors also wish to acknowledge the Chesapeake Stormwater Network, Montgomery County Department of Environment Protection, the Alliance for the Chesapeake Bay, and the Anne Arundel Watershed Stewards Academy, and David Hirschman for images and tables shared.

## References

- Anne Arundel (2016) Watersheds Stewards Academy *Rainscaping Manual*, <http://aawsa.org/wsa-rainscaping-manual-2>.
- Flores, H., McMonigle, D., and Underwood, K. 2012. *Regenerative Step Pool Storm Conveyance (SPSC) Design Guidelines*. Anne Arundel County. Rev. 5. <http://dev.aacounty.org/departments/public-works/wprp/forms-and-publications/SPSCdesignguidelinesDec2012Rev5a.pdf>
- Bahr, Ray, Ted Brown, LJ Hansen, Joe Kelly, Jason Papacosma, Virginia Snead, Bill Stack, Rebecca Stack, and Steve Stewart. Final Approval by WQGIT: October 9 2012. *Recommendations of the Expert Panel to Define Removal Rates for Urban Stormwater Retrofit Projects*. [http://www.chesapeakebay.net/documents/Final\\_CBP\\_Approved\\_Expert\\_Panel\\_Report\\_on\\_Storm\\_water\\_Retrofits--\\_short.pdf](http://www.chesapeakebay.net/documents/Final_CBP_Approved_Expert_Panel_Report_on_Storm_water_Retrofits--_short.pdf)
- Calarie, Peter. 2014. *Urban Green Infrastructure Maintenance Manual*. Pennsylvania State University Penn State Center Engaging Pittsburgh Outreach and Extension.
- Chesapeake Bay Program. 2005. *Map: Chesapeake Bay Record Dead Zone*, August 2005. [www.chesapeakebay.net](http://www.chesapeakebay.net).
- Chesapeake Stormwater Network. 2012. Technical Bulletin No. 4: *Technical Support for the Bay-wide Runoff Reduction Method v.2*. <http://chesapeakestormwater.net/2012/01/technical-bulletin-no-4-baywide-runoff-reduction-method/>
- Chesapeake Stormwater Network. 2015. *Good Recipes for the Bay Pollution Diet: U-5 Urban Nutrient Management*. [http://chesapeakestormwater.net/wp-content/uploads/dlm\\_uploads/2015/06/U5.-Urban-Nutrient-Management-Fact-Sheet-in-Chesapeake-Bay-August-2015.pdf](http://chesapeakestormwater.net/wp-content/uploads/dlm_uploads/2015/06/U5.-Urban-Nutrient-Management-Fact-Sheet-in-Chesapeake-Bay-August-2015.pdf)
- Corson, Cheryl C. 2016. *Sustainable Landscape Maintenance Manual for the Chesapeake Bay Watershed*. <https://cblpro.org/downloads/CBLPMaintenanceManual.pdf>.
- Gilland, Traci, Fox, L., Andruczyk, M., French, S. and Swanson, L. 2009. *Urban Water-Quality Management: What is a Watershed?* Virginia Cooperative Extension Publication 426-041.
- Hirschman, D., Collins, K., Schueler, T.R., 2008. Technical Memorandum: *The Runoff Reduction Method*. Center for Watershed Protection & Chesapeake Stormwater Network.
- Legal Information Institute. 2019. 40 CFR § 122.2 – Definitions. Cornell Law School. <https://www.law.cornell.edu/cfr/text/40/122.2>. Accessed 11/12/19.
- Potomac Conservancy. 2007. *State of the Nation's River: Potomac Watershed 2007*. From U.S. Environmental Protection Agency, Office of Wetlands, Oceans and Watersheds. Adapted from: Pollution Probe. 2004. *The Source Water Protection Primer*. [www.potomac.org/site/state-of-the-nations-river/](http://www.potomac.org/site/state-of-the-nations-river/).
- Potomac Conservancy. 2008. *State of the Nation's River 2008: Potomac Stormwater Runoff*.
- U.S. Environmental Protection Agency, Office of Wetlands, Oceans and Watersheds. [www.potomac.org/site/state-of-the-nations-river-2008](http://www.potomac.org/site/state-of-the-nations-river-2008).
- Sample, D. J., Wang, C., Fox, L.J. 2013. Innovative Best Management Fact Sheet No. 1: *Floating Treatment Wetlands*. Virginia Cooperative Extension Publication BSE-76P.
- Sample, D. J., and L. J. Fox. 2010. Virginia Urban Nutrient Management Handbook: Chapter 12. *Principles of Stormwater Management for Reducing Nutrients from Urban Landscaped Areas*.
- Shelton, D. P., and K. A. Feehan. 2008. *Stormwater Management on Residential Lots*. University of Nebraska-Lincoln Extension Publication EC707.
- University of Maryland Center for Environmental Science (UMCES), Integration and Application Network, and EcoCheck. 2008. *Chesapeake Bay Report Card 2008*. (EcoCheck is a partnership between UMCES and the National Oceanographic and Atmospheric Administration.) [http://ian.umces.edu/pdfs/ecocheck\\_newsletter\\_209.pdf](http://ian.umces.edu/pdfs/ecocheck_newsletter_209.pdf).

University of Maryland Center for Environmental Science (UMCES), Integration and Application Network, EcoCheck, and Chesapeake Bay Program. 2011. *Total Maximum Daily Loads: A citizen's guide to the Chesapeake Bay TMDL*.

Virginia Department of Environmental Quality, 2013. Virginia Stormwater BMP Clearinghouse website: <http://www.vwrrc.vt.edu/swc/NonProprietaryBMPs.html>

Vreugdenhil et al. 2003. IUCN task force on Protected Areas System Composition and Monitoring. [http://www.ecosystems.ws/ecosystem\\_concept.htm](http://www.ecosystems.ws/ecosystem_concept.htm) Accessed October 2016.

Washington Environmental Council. 2009. *Stormwater Management: One Backyard at a Time*. Video Workshop, Sept. 15, 2009. [www.wecprotects.org](http://www.wecprotects.org).

Table 2. Description of Chesapeake Bay Approved Urban Stormwater Best Management Practices

BMP Name	Description	Practice Type <sup>1</sup>					
		ESD	RR	ST	DR	UP	OP
Bioretention Practices  Rain Gardens	<i>Bioretention areas or basins</i> and smaller versions known as <i>rain gardens</i> are shallow landscaped depressions that collect runoff. The practice includes a vegetated layer, a mulch layer, a media layer, an overflow, and sometimes an underdrain. Runoff is treated by physical, chemical and biological processes. Additional benefits include enhanced biodiversity, increased wildlife habitat, and beautiful features in the urban landscape. Other forms of bioretention are <i>urban planters, expanded tree pits, and bioswales</i> . <i>Bioinfiltration</i> may also be used to describe this		●				
Constructed Wetlands/ Treatment Wetlands	<i>Constructed wetlands or treatment wetlands</i> are like a pond, but vary substantially in shape and form, particularly the bottom topography. Types of <i>constructed wetlands</i> include <i>shallow marshes, extended detention, pond/wetland systems, pocket wetlands, and forested wetland systems</i> . They have long flow paths, which increases runoff residence time and enhances pollutant removal through settling, biological uptake,			●		●	
Dry Swale/ Bioswale	<i>Dry swales and bioswales</i> are linear forms of a <i>bioretention practice</i> and function similarly to a bioretention area, but are shaped to form a linear, shallow, gently sloping channel or swale with broad vegetated side slopes and may include a series of check dams. <i>Dry swales</i> provide temporary storage and filtering of runoff through vegetation and soil/media. Vegetation used may include native plantings or turf.		●				
Extended Detention Ponds/ Dry Ponds	<i>Extended detention ponds, also called dry ponds</i> , provide 12-24 hours of storage of runoff during rainfall events and are normally dry between events. Releases from the pond are controlled by hydraulic controls at specific elevations within the pond's outlet structure. Treatment is provided by gravity settling; however, it is limited because many of the settled pollutants often get resuspended and flushed out in subsequent storm events. Many ponds have a planted bank, basin, and buffer with vegetation including turf that must be maintained according to design specifications.			●			

<sup>1</sup> Practice Type: Environmental Site Design (ESD); Runoff Reduction (RR); Stormwater Treatment (ST); Downstream Restoration (DR); Usually Proprietary (UP); Often Proprietary (OP)

Table 2. Description of Chesapeake Bay Approved Urban Stormwater Best Management Practices

BMP Name	Description	Practice Type <sup>1</sup>					
		ESD	RR	ST	DR	UP	OP
Filter Strip	This ESD practice, also known as <i>Urban, Vegetated or Grass Filter Strip</i> , is a uniformly graded area typically densely vegetated or covered with turf grass that intercepts runoff flowing broadly as sheet flow across the filter strip. If runoff flow is concentrated such as occurs in a ditch or a swale, a level spreader may be used to spread flow out. The filter strip can be designed on an area of conserved open space of native vegetation. This practice is also known as <i>Sheet Flow to a Vegetated Filter Strip or Conserved Open Space</i> . <i>Filter Strips</i> can be used in a treatment train as a runoff pretreatment for roads, parking lots, or downspouts before discharge to <i>Bioretention Practices or Riparian and Shoreline Buffers</i> .	●	●				
Filtering Practices	<i>Filtering Practices</i> treat runoff by passing it through an engineered filter media consisting of either sand, gravel, organic matter, and/or a commercially manufactured product; collecting it in an underdrain; and then discharging it to a stormwater system. <i>Filtering Practices</i> often involve unique, proprietary systems and technologies and are typically designed, installed, and maintained by professionals with specialized expertise.			●			
Floating Treatment Wetlands	<i>Floating Treatment Wetlands</i> consists of vegetation growing hydroponically on floating rafts; essentially creating man-made wetlands. The vegetation’s roots hang below the raft and in conjunction with the biofilm that covers them, remove nutrients through sedimentation, microbial degradation, and uptake. Vegetation on these floating wetlands must be established and maintained like any other vegetated practice.			●			
Green/Living Walls	<i>Green or Living Walls</i> consist of either a vertical or angled wall that is partially or completely covered with vegetation, which is rooted in media. Types of media include soil, engineered media, or mat, sheet, or structural systems. Water is usually supplied through drip irrigation. Green walls provide treatment through filtration and evapotranspiration. They also provide significant energy benefits and are being used more frequently in highly urbanized areas and green building projects.		●				
Infiltration Practices	<i>Infiltration basins, trenches, and dry wells</i> provide temporary surface or subsurface storage, allowing runoff to infiltrate into underlying soils. They are usually constructed by excavating a basin or trench, which is then filled with gravel or stone to the ground level although their surface may be covered by turf grass. Placement is often limited to areas where highly permeable underlying soils are present.		●				

<sup>1</sup> Practice Type: Environmental Site Design (ESD); Runoff Reduction (RR); Stormwater Treatment (ST); Downstream Restoration (DR); Usually Proprietary (UP); Often Proprietary (OP)

Table 2. Description of Chesapeake Bay Approved Urban Stormwater Best Management Practices

BMP Name	Description	Practice Type <sup>1</sup>					
		ESD	RR	ST	DR	UP	OP
Infiltration Practices	<i>Infiltration basins, trenches, and dry wells</i> provide temporary surface or subsurface storage, allowing runoff to infiltrate into underlying soils. They are usually constructed by excavating a basin or trench, which is then filled with gravel or stone to the ground level although their surface may be covered by turf grass. Placement is often limited to areas where highly permeable underlying soils are present.		●				
Landscape or Horticultural Restoration Practices	<i>Urban tree planting, reforestation, and riparian and shoreline buffers</i> are a collection of environmental site design or horticultural/landscape restoration practices that provide water quality benefits from land cover changes using native plants. Activities in this category include: impervious cover or turf removal and replacement with native vegetation also known as <i>conservation landscaping with native plants or bayscaping</i> ; protecting, planting or increasing the width of shoreline buffers; restoring, protecting, layering, and increasing urban tree canopy; and planting trees and other native vegetation with the goal of reforestation. Treatment is through canopy layers that reduce runoff and through increased infiltration and biological processes.	●					
Living Shorelines	This natural shoreline management practice provides erosion control and water quality benefits, protects and enhances shoreline habitat, and maintains coastal processes. <i>Living shoreline</i> practices include marsh and buffer plantings, use of stone, sand fill, and other structural and organic materials, and the use of containment structures, breakwaters, or other natural components. A permit and special design expertise is needed to implement this practice. A shoreline buffer of native plants is typically installed with this practice and must be established and maintained.				●		
Permeable or Porous Pavement	<i>Permeable or porous pavement</i> are specialized <i>permeable hardscape</i> practices that consist of a top pavement layer and an underlying stone layer. The surface pavement has gaps or voids that runoff filters through into the stone layer, which provides storage. Runoff infiltrates from the stone layer into surrounding soils. Underdrains are sometimes used when infiltration into the surrounding soils is not possible or appropriate. Pavement materials include interlocking paver systems, porous concrete or porous asphalt.		●				●

<sup>1</sup> Practice Type: Environmental Site Design (ESD); Runoff Reduction (RR); Stormwater Treatment (ST); Downstream Restoration (DR); Usually Proprietary (UP); Often Proprietary (OP)

Table 2. Description of Chesapeake Bay Approved Urban Stormwater Best Management Practices

BMP Name	Description	Practice Type <sup>1</sup>					
		ESD	RR	ST	DR	UP	OP
Rainwater Harvesting	<i>Rain barrels and cisterns are rainwater harvesting practices that intercept and store rooftop runoff for later use. Runoff is stored in a tank, above or below ground, and may be used for non-potable purposes such as irrigation or toilet flushing. Year-round uses of the reuse water are preferred.</i>		●			●	
Rooftop and Impervious Surface Disconnection	This environmental site design (ESD) practice redirects runoff from rooftops and hard surfaces to vegetated areas of a specific size, providing reduction in runoff through infiltration. This is one of the simplest ways to reduce runoff volume. Also known as <i>downspout disconnection</i> or <i>redirect downspouts</i> where downspouts are redirected to <i>rainwater harvesting, bioretention, or infiltration practices in a simple treatment train.</i>	●	●				
Soil Restoration/Soil Amendments	This ESD practice is typically used to restore porosity to compacted soils. Soils are restored through biological processes (worms), physical processes such as aeration, tilling, planting dense vegetation, and application of soil amendments such as compost or biochar containing organic carbon to enhance soil structure, infiltration, rooting, water holding, and pollutant removal capacity. The practice is used to reduce runoff from compacted urban lawns and/or used to enhance the runoff reduction performance of <i>downspout disconnections, grass swales, and filter strips.</i>	●	●				
Urban Nutrient Management	<i>Urban Nutrient Management (UNM)</i> is a collection of environmental site design and landscape management practices that address lawn or turf care and nutrient management for the total landscape. Activities include turf selection, proper mowing height, integrated pest management, and development and implementation of a site-specific plan for managing nutrient timing, amounts, and application for the total landscape. Activities might also include buffer restoration between lawns and waterways. Generally, to receive credit as a residential stewardship practice, these plans will follow the 10 core UNM practices of the Chesapeake Bay Program and include a property owner pledge to implement those practices. Most states now restrict and control the commercial application of fertilizers through state laws and certification programs. Virginia trains and regulates through the UNM Planner Certification and Certified Fertilizer Applicator programs. Maryland trains and regulates through the Professional Turf Grass Fertilizer Applicator Certificate Program.	●					

<sup>1</sup> Practice Type: Environmental Site Design (ESD); Runoff Reduction (RR); Stormwater Treatment (ST); Downstream Restoration (DR); Usually Proprietary (UP); Often Proprietary (OP)

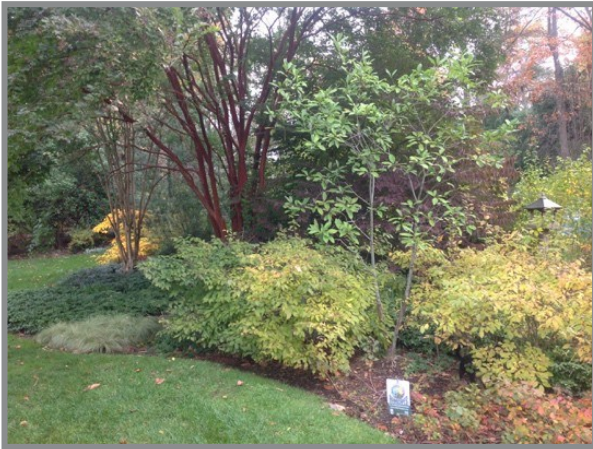
Table 2. Description of Chesapeake Bay Approved Urban Stormwater Best Management Practices

BMP Name	Description	Practice Type <sup>1</sup>					
		ESD	RR	ST	DR	UP	OP
Urban Stream Restoration	<i>Urban stream restoration</i> is a set of actions intended to restore a balance to streams impacted by urban development and improve their ecological health. Actions include channel modification, streambank stabilization, cross-vanes, overlapping rip rap, step pools, brush layering, woody debris and/or log jams, regenerative stream conveyance, and reconnection of flood plains. Some of these activities do not remove pollutants or runoff but simply protect and conserve existing streambanks. A permit and special design and construction expertise is typically needed to implement this practice and a buffer planting of native plants that must be established and maintained is typically included.				●		
Vegetated or Green Roofs	This practice consists of vegetation, layers of special soil mixture (planting media), drainage materials, a drainage system, and a waterproof membrane. They can be installed on roofs that are designed or retrofitted to support the additional weight of vegetation and media. Modular, green roof systems of plants and soil media grown and installed in permeable flats are sometimes used. Vegetated roofs temporarily store rainwater, reduce and treat runoff through uptake and evapotranspiration by plants or adsorption onto media, and allow remaining water to gradually drain off. Vegetated roofs provide energy savings and extend roof life. <i>Intensive systems</i> have a deeper growing media layer that ranges from 6 inches to 4 feet thick, are planted with a wider variety of plants, and can include trees. <i>Extensive systems</i> typically have much shallower growing media (2 to 6 inches) and are planted with drought tolerant vegetation.		●				●
Wet Ponds/ Retention Ponds	<i>Wet ponds</i> , also known as <i>retention ponds</i> , are a constructed pond or lake whose water depth is set to a specific control level, normally through an outlet structure. Wet ponds store and release water over time, which helps control downstream flooding and protects stream channels from being blown out. Treatment consists of settling of solids and biological uptake of nutrients. Many ponds have a planted bank or buffer that must be maintained according to design specifications. Typically, trees are not allowed to establish on the planted bank.			●			
Wet Swale	<i>Wet swales</i> are a cross between a wetland and a swale. Soils are continually saturated or inundated by shallow standing water, which supports wetland vegetation and treatment.			●			

<sup>1</sup> Practice Type: Environmental Site Design (ESD); Runoff Reduction (RR); Stormwater Treatment (ST); Downstream Restoration (DR); Usually Proprietary (UP); Often Proprietary (OP)

Table 3. Images of Chesapeake Bay Program Approved Urban Stormwater Best Management Practices

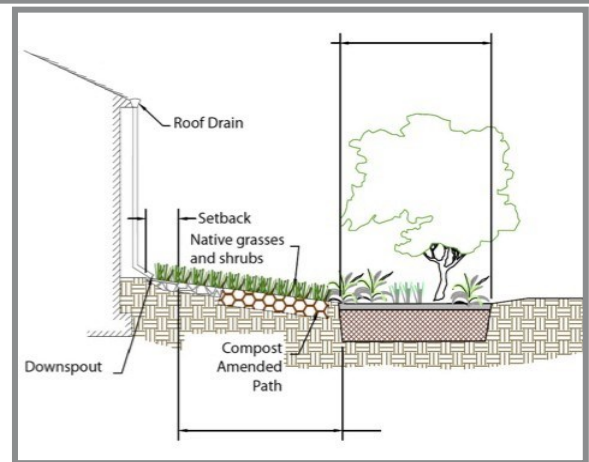
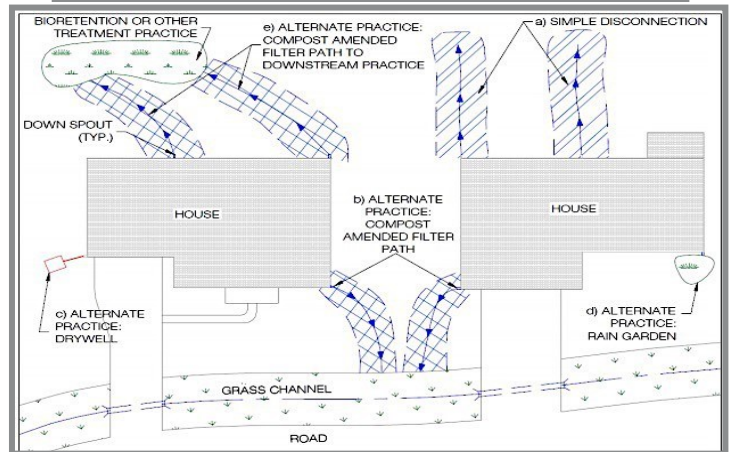
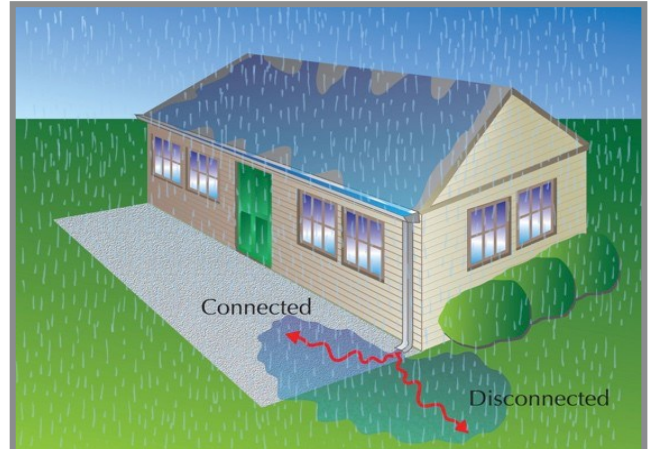
Landscape or Horticultural Restoration Practices



Conservation Landscaping and Urban Tree Planting  
Credit: Montgomery County Department of Environmental Protection (DEP)

Riparian Buffer Restoration Credit: Alliance for the Chesapeake Bay

Rooftop and Impervious Surface Disconnection



Source: Virginia Department of Environmental Quality (DEQ)

Table 3. Images of Chesapeake Bay Program Approved Urban Stormwater Best Management Practices

### Soil Restoration/Soil Amendments



*Credit: Alliance for the Chesapeake Bay*

### Urban Nutrient Management— 10 Core Practices


1. Maintain dense cover of grass or conservation landscaping; avoid bare soils.
2. Reduce or eliminate fertilizer.
3. Do not apply fertilizers before spring green up or after grass is dormant.
4. Maximize use of slow release nitrogen fertilizer.
5. Immediately sweep off any fertilizer that lands on paved surfaces.
6. Never apply fertilizer within 15 to 20 feet of any water feature – manage as grass, meadow or forest buffer.
7. Keep clippings and mulched leaves on lawn and out of streets and storm drains.
8. Set mower height at 3 inches or higher.
9. Use other practices to increase the porosity and infiltration capability of lawn to treat stormwater.
10. Consult with a local extension service office or lawn care company to get best advice on how to have a Bay-friendly lawn, which might involve a soil test analysis.



*Mow higher & keep clipping out of drain*  
*Credit: Chesapeake Stormwater Network (CSN)*

*Turf replaced with native grasses*  
*Credit: Beth Ginter*

### Rainwater Harvesting—Cistern and Rain barrels



*Source: Anne Arundel Watershed Stewards Academy (WSA) Rainscaping Manual.*

*Source: Urban Green Infrastructure Maintenance Manual by the Penn State Center.*

Table 3. Images of Chesapeake Bay Program Approved Urban Stormwater Best Management Practices

### Filter Strip

Source: CSN

Source: Virginia DEQ

### Vegetated/Green Roof

By Peter Calaric

### Permeable or Porous Pavement

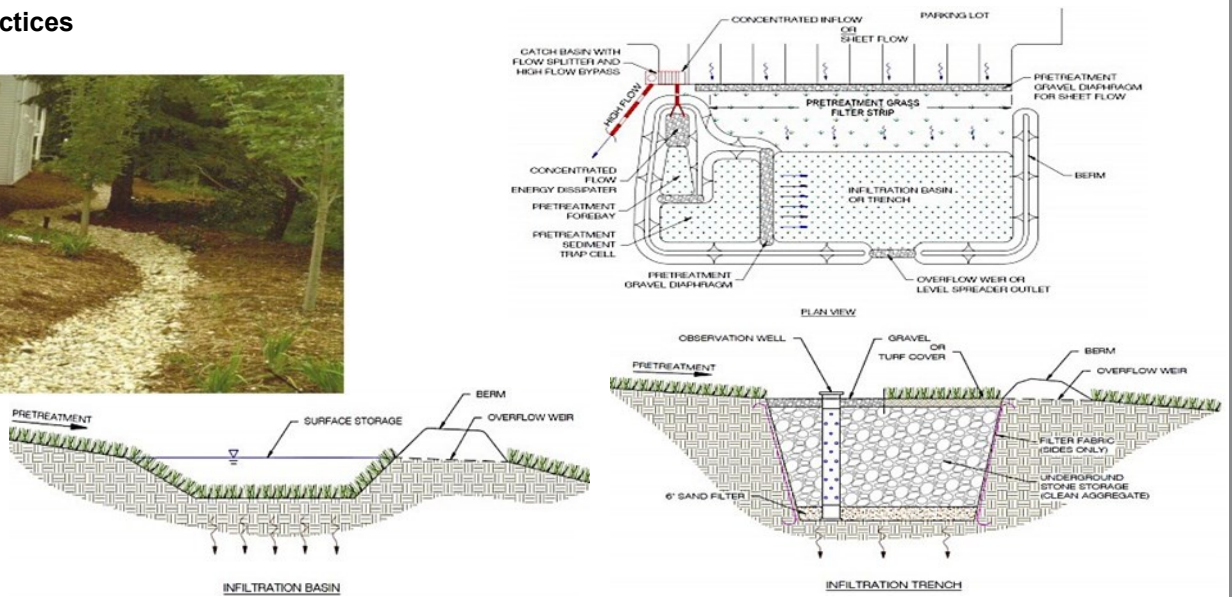
Credit: Alliance for the Chesapeake Bay

Table 3. Images of Chesapeake Bay Program Approved Urban Stormwater Best Management Practices

### Infiltration Practices



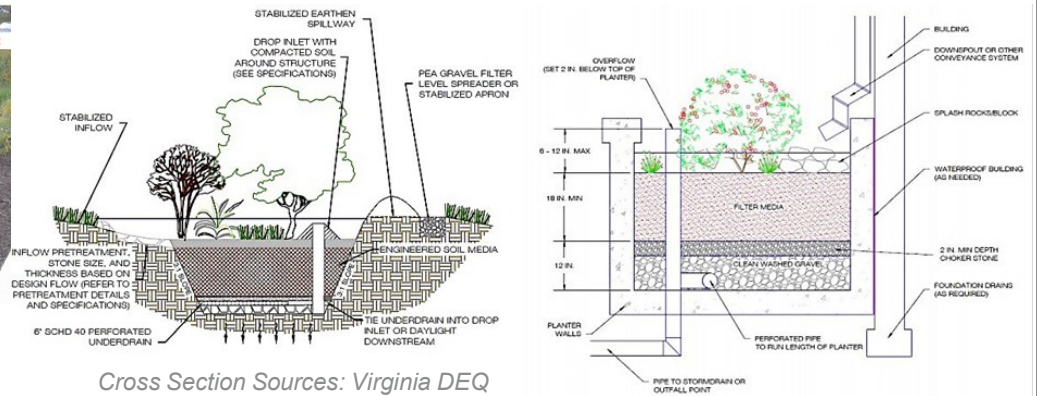
Source: Virginia DEQ



### Bioretention



Source: CSN



Cross Section Sources: Virginia DEQ

### Wet Swale

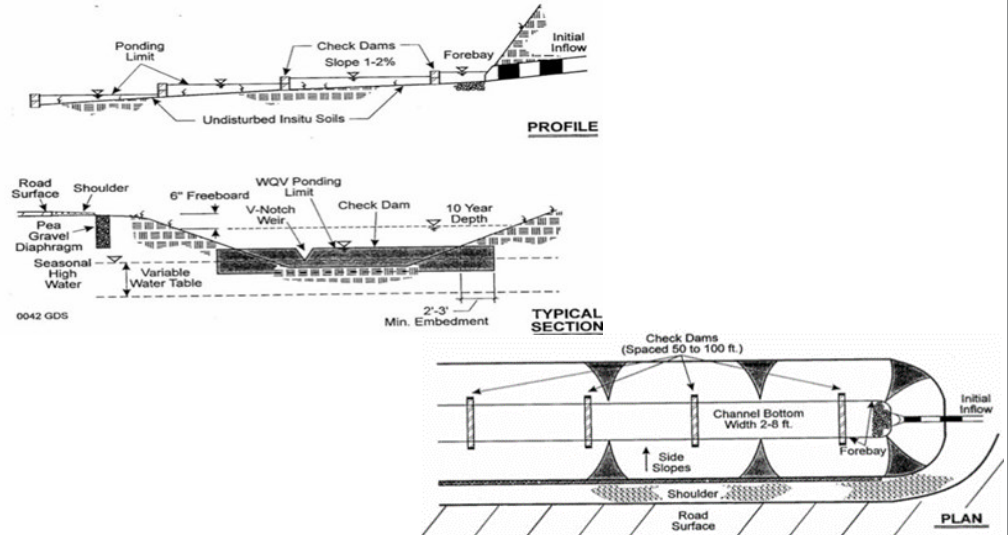
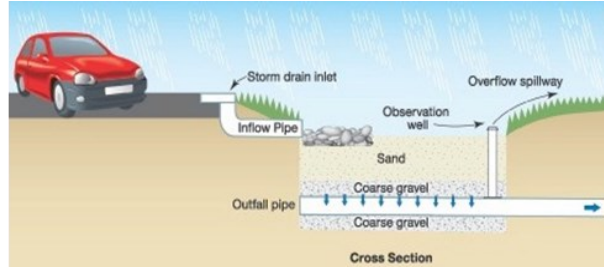


Table 3. Images of Chesapeake Bay Program Approved Urban Stormwater Best Management Practices

**Filtering Practices**

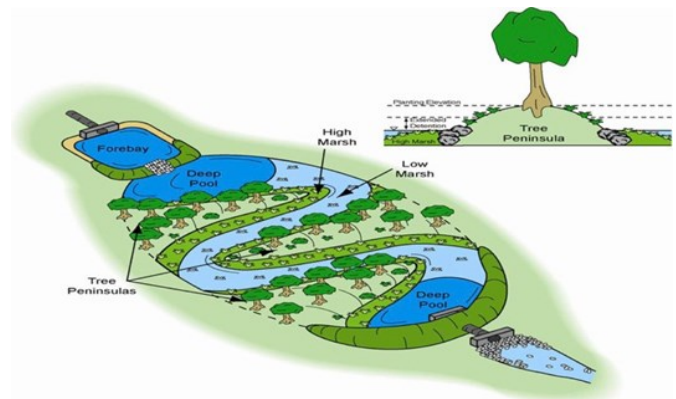


Surface Sand Filter with turf cover

Source: Montgomery County DEP

Source: CSN

**Constructed/Treatment Wetlands**



**Soil Restoration/Soil Amendments**

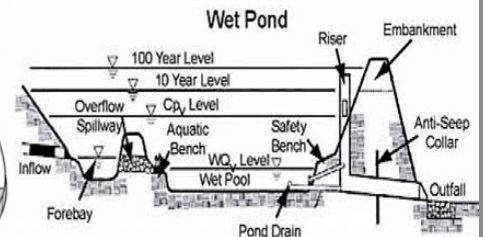
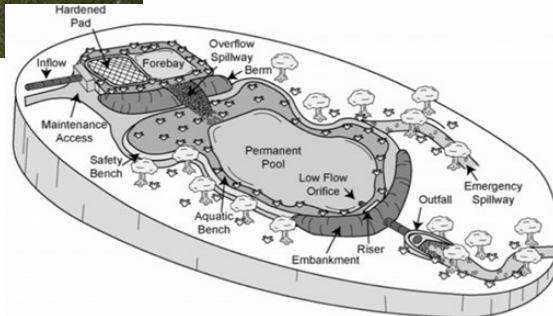
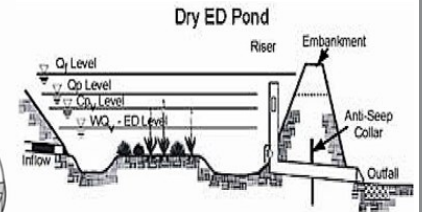
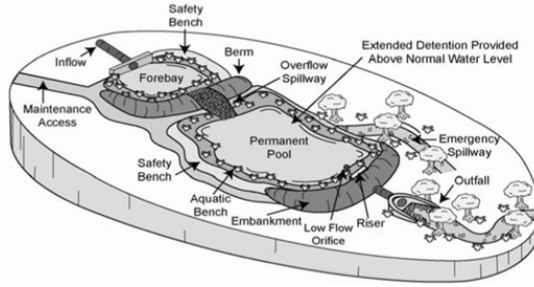


Table 3. Images of Chesapeake Bay Program Approved Urban Stormwater Best Management Practices

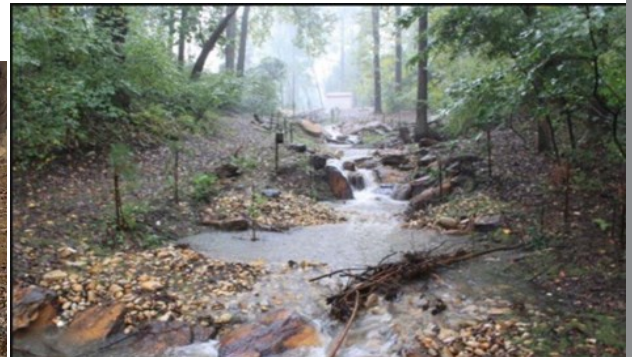
### Extended Detention/Dry Ponds



### Urban Stream Restoration



Stream & Riparian Buffer Restoration Credit: Montgomery County, MD



Regenerative Stormwater Conveyance & Riparian Buffer Restoration  
Credit: Anne Arundel County, MD

### Green/Living Walls



Furbish-designed Interior Living Wall  
Photo credit: Carole Barth

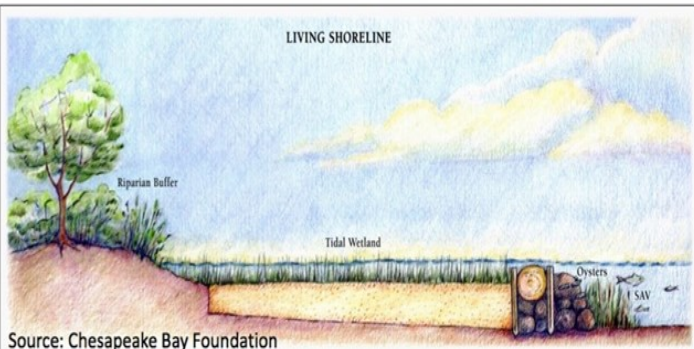


Furbish-designed SmartSlope Vegetated Retaining Wall  
Photo credit: Carole Barth

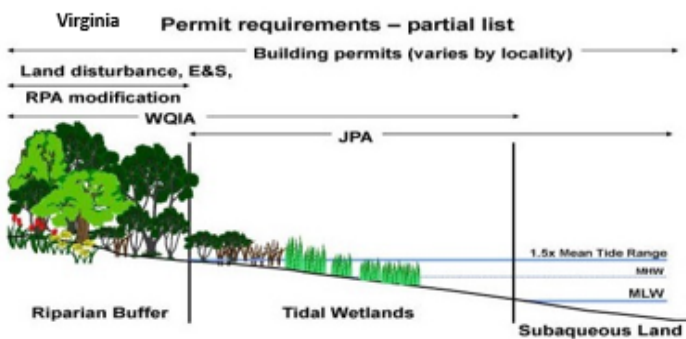
Table 3. Images of Chesapeake Bay Program Approved Urban Stormwater Best Management Practices

### Living Shorelines

Stone & other engineered structures are minor elements to support living habitats




Source: Chesapeake Bay Foundation

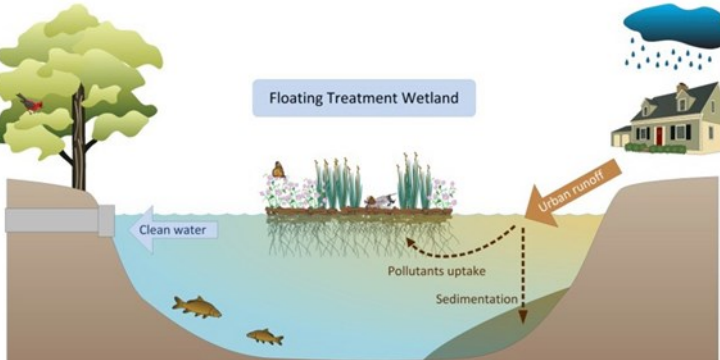


Source: Virginia Institute of Marine Science Center for Coastal Resource Management

### Floating Treatment Wetlands



Source: CSN



Source: Sample, Wang, and Fox 2013 VCE Publication BSE-76P















Jennifer Dindinger

Watershed Restoration Specialist, University of Maryland Sea Grant Extension

Kristen Kyler

Project Coordinator, Penn State Agriculture and Environment Center

Amanda Rockler

Watershed Restoration Specialist, University of Maryland Sea Grant Extension

David Sample

Associate Professor, Biological Systems Engineering, Virginia Tech

Laurie Fox

Research Associate, Hampton Roads Agricultural Research & Extension Center, Virginia Tech

Shereen Hughes

Assistant Director, Wetlands Watch and CBLP Virginia Coordinator

This publication, *Basic Principles of Watershed Restoration and Stormwater Management in the Chesapeake Bay Region* (EB-440), is a series of publications of the University of Maryland Extension and Maryland Sea Grant.

The information presented has met UME peer review standards, including internal and external technical review. For help accessing this or any UME publication contact: [itaccessibility@umd.edu](mailto:itaccessibility@umd.edu)

For more information on this and other topics, visit the University of Maryland Extension website at [extension.umd.edu](http://extension.umd.edu)

*University programs, activities, and facilities are available to all without regard to race, color, sex, gender identity or expression, sexual orientation, marital status, age, national origin, political affiliation, physical or mental disability, religion, protected veteran status, genetic information, personal appearance, or any other legally protected class.*